



# RESOURCE GUIDE FOR PREGNANT & PARENTING PEOPLE AFFECTED BY SUBSTANCE USE

---

A GUIDE FOR PROFESSIONALS IN NEW JERSEY

Perinatal Addictions Prevention Project

30 Silverline Drive  
Second Floor, Suite 1  
North Brunswick, NJ 08902  
732-947-5437 ● [www.cjfhc.org](http://www.cjfhc.org)



# CONTENTS

Maternal and Child Health Consortia	3
Boards of Social Services	4
Diagnostic Centers for FAS/FASD	6
Domestic Violence Support	7
Connecting NJ	8
Federally Qualified Health Centers (FQHC)	9
Medication Assisted Therapies (MAT)	13
Outpatient & Intensive Outpatient Treatment Services	18
Residential / Transitional Housing	30
Smoking Cessation	34
Self Help Groups	35
General Assistance	37

---

## PERINATAL ADDICTIONS PREVENTION PROJECT

### Our Mission Statement

To improve the wellbeing of pregnant people and people of childbearing age affected by the challenges of substance use.

Our goal is to ensure the health and wellbeing of every parent and child. The Perinatal Addictions Prevention Project:

- Provide prevention education to professionals & consumers on the impact of alcohol, tobacco, and other drugs on pregnant people and their children.
- Promote the use of the Perinatal Risk Assessment (PRA) to Prenatal Care Providers.
- Provide resources and referrals for people capable of pregnancy affected by substance use.
- Collaborate with municipal, county, and state alliances, task forces, coalitions, and councils to reduce and prevent substance use.

#### Central Jersey Family Health Consortium (CJFHC)

30 Silverline Drive  
Second Floor, Suite 1  
North Brunswick, NJ 08902  
732-937-5437 ext. 135  
[cjfhc.org](http://cjfhc.org)



#### Partnership for Maternal Child Health of Northern New Jersey (PMCHNNJ)

50 Park Place  
Suite 700  
Newark, NJ 07102  
201-876-8900 ext. 228  
[partnershippmch.org](http://partnershippmch.org)



#### The Cooperative

2500 McClellan Avenue  
Suite 250  
Pennsauken, NJ 08109  
856-675-5310  
[thecooperative.org](http://thecooperative.org)

---

# BOARDS OF SOCIAL SERVICES

## **Hunterdon County Division of Social Services**

6 Gauntt Place  
PO Box 2900  
Flemington, NJ 08822  
Phone 908-788-1300  
Fax 908-806-4588  
[co.hunterdon.nj.us/615/Social-Services](http://co.hunterdon.nj.us/615/Social-Services)

## **Mercer County Board of Social Services**

200 Woolverton Street  
PO Box 1450  
Trenton, NJ 08650  
Phone 609-989-4320  
Fax 609-394-6638  
[mcboss.org](http://mcboss.org)

## **Middlesex County Board of Social Services**

181 How Lane  
PO Box 509  
New Brunswick, NJ 08901  
Phone 732-745-3500  
Fax 732-745-4558  
[middlesexsocialservices.com](http://middlesexsocialservices.com)

## **Monmouth County Division of Social Services**

3000 Kozloski Road  
Freehold, NJ 07728  
Phone 732-431-6000  
Fax 732-431-6266  
[co.monmouth.nj.us/page.aspx?ID=163](http://co.monmouth.nj.us/page.aspx?ID=163)

---

## **Ocean County Board of Social Services**

1027 Hooper Avenue

PO Box 547

Toms River, NJ 08753

**Phone 732-349-1500**

**Fax 732-244-8075**

[co.ocean.nj.us/SocialServices/](http://co.ocean.nj.us/SocialServices/)

## **Somerset County Board of Social Services**

73 East High Street

PO Box 936

Somerville, NJ 08876

**Phone 908-526-8800**

**Fax 908-707-1941**

[www.co.somerset.nj.us/government/affiliated-agencies/social-services](http://www.co.somerset.nj.us/government/affiliated-agencies/social-services)

---

# DIAGNOSTIC CENTERS FOR FETAL ALCOHOL SPECTRUM DISORDERS (FASD)

## **Children's Specialized Hospital**

Multiple Locations Available

**888-244-5373**

[www.rwjbh.org/childrens-specialized-hospital/](http://www.rwjbh.org/childrens-specialized-hospital/)

## **Children's Seashore House of the Children's Hospital of Philadelphia**

4009 Black Horse Pike  
Mays Landing, NJ 08330  
609-677-7895

## **Jersey Shore University Medical Center**

81 Davis Ave Suite 4  
Neptune, NJ 07753  
732-776-3504

## **Rutgers New Jersey Medical School**

183 South Orange Ave  
Behavioral Health Science Building F Level  
Newark, NJ 07103  
973-972-3818



For a comprehensive list of Child Evaluation Centers, please visit:  
[www.nj.gov/health/fhs/specialpediatrics/child-evaluation/contacts/](http://www.nj.gov/health/fhs/specialpediatrics/child-evaluation/contacts/)

---

# DOMESTIC VIOLENCE SUPPORT

## Hunterdon County

### Safe in Hunterdon

PO Box 63  
Flemington, NJ 08822  
**908-806-0019**  
[safeinhunterdon.org](http://safeinhunterdon.org)

## Mercer County

### Younity

1530 Brunswick Avenue  
Lawrenceville, NJ 08648  
**609-394-0136**  
[younitynj.org](http://younitynj.org)

## Middlesex County

### Women Aware

250 Livingston Avenue  
New Brunswick, NJ 08901  
**732-249-4504**  
[womenaware.net](http://womenaware.net)

## Monmouth County

### 180 Turning Lives Around

**888-843-9262**  
[180nj.org](http://180nj.org)

## Ocean County

### Providence House

88 Schoolhouse Road  
Whiting, NJ 08759  
**732-244-8259 or 800-246-8910**  
[catholiccharitiestrenton.org](http://catholiccharitiestrenton.org)

## Somerset County

### Safe and Sound Somerset

PO Box 835  
Somerville, NJ 08876  
**908-359-0003**  
[safe-sound.org](http://safe-sound.org)

For a comprehensive list of Domestic Violence  
Direct Services in NJ, please visit:  
[www.nj.gov/dcf/women/domestic/](http://www.nj.gov/dcf/women/domestic/)



---

# CONNECTING NJ

## What is Connecting NJ?

Connecting NJ connects people who are pregnant and/or parenting, children, and families to community resources and services that address their needs.

## What type of information can Connecting NJ provide you with?

Connecting NJ can help you find resources for various needs such as housing, health insurance, child care, and transportation. We can also connect you with free home visiting programs, case management, WIC, and other programs in your area.

For more information, contact Connecting NJ directly.

For Hunterdon, Mercer, Middlesex, and Somerset Counties, call 1-888-551-6217.

For Monmouth and Ocean counties, call 1-877-352-7843.



---

# FEDERALLY QUALIFIED HEALTH CENTERS (FQHC)

## Hunterdon County

### Zufall Dental Health Center

361 Route 31  
Building C, Suite 701  
Flemington, NJ 08822  
**908-968-4440**  
[zufallhealth.org](http://zufallhealth.org)  
*\*dental services only\**

## Mercer County

### Henry J. Austin Health Centers

433 Bellevue Avenue  
Trenton, NJ 08618

317 Chambers Street  
Trenton, NJ 08609

112 Ewing Street  
Trenton, NJ 08609

321 North Warren Street  
Trenton, NJ 08618

**609-278-5900**  
[henryjaustin.org](http://henryjaustin.org)

10 Southard Street  
Trenton, NJ 08609

**800-360-7711**  
[henryjaustin.org](http://henryjaustin.org)

314-316 East State Street  
Trenton, NJ 08608

**609-396-4258**  
[henryjaustin.org](http://henryjaustin.org)

## Middlesex County

### Eric B. Chandler Health Centers

[rwjms.rutgers.edu](http://rwjms.rutgers.edu)

---

123 Church Street  
New Brunswick, NJ 08901  
**732-235-2052**

277 George Street  
New Brunswick, NJ 08901  
**732-235-6700**

1000 Somerset Street  
New Brunswick, NJ 08901  
**732-235-7435**

### **Central Jersey Medical Center**

275 Hobart Street  
Perth Amboy, NJ 08861  
**732-376-9333**  
[jrnc.us](http://jrnc.us)

### **Jewish Renaissance Foundation Community Health Center**

1931 Oak Tree Road  
Edison, NJ 08820  
**732-482-9600**  
[jrfnj.org](http://jrfnj.org)

### **Zufall Health Center**

One Plainsboro Road  
Plainsboro, NJ 08536  
**609-853-7600**  
[zufallhealth.org](http://zufallhealth.org)

## **Monmouth County**

### **Monmouth Family Health Centers**

270 Broadway  
Long Branch, NJ 07740  
**732-923-7100**

335 Broadway  
Long Branch, NJ 07740  
**732-413-2030**

\*dental services only at this location\*

---

80 Pavilion Avenue  
Long Branch, NJ 07740  
**732-963-0114**  
\*ob/gyn services only\*  
[mfhcnj.org](http://mfhcnj.org)

### **Visiting Nurses Association**

1301 Main Street  
Asbury Park, NJ 07712  
**732-774-6333**

64-66 Bridge Ave  
Red Bank, NJ 07701  
**732-219-6620**

35 Broad Street  
Keyport, NJ 07735  
**732-888-4149**

597 Park Avenue  
Freehold, NJ 07728  
**732-294-2540**

[vnachc.org](http://vnachc.org)

### **Ocean Health Initiatives - Freehold**

20 Jackson Street  
Suite E  
Freehold, NJ 07728  
**732-363-6655**  
[ohinj.org](http://ohinj.org)

## **Ocean County**

### **Ocean Health Initiatives**

101 Second Street  
Lakewood, NJ 08701

333 Haywood Road  
Manahawkin, NJ 08050

1610 Route 88 Suite 203  
Brick, NJ 08724

625 Clifton Avenue  
Lakewood, NJ 08701

10 Stockton Drive  
Toms River, NJ 08755

798 Route 539 Building 3  
Little Egg Harbor, NJ 08087

**732-363-6655**  
[ohinj.org](http://ohinj.org)

855 Somerset Avenue  
Lakewood, NJ 08701

---

## **CHEMED Health Center**

1171 River Avenue  
Lakewood, NJ 08701

**732-884-2222**  
[chemedhealth.org](http://chemedhealth.org)

1771 Madison Avenue  
Lakewood, NJ 08701

108 Hillside Boulevard  
Lakewood, NJ 08701

**732-364-6666**  
[chemedhealth.org](http://chemedhealth.org)

## **Somerset County**

### **Zufall Health Center**

71 Fourth Street  
Somerville, NJ 08876

**908-526-2335**  
[zufallhealth.org](http://zufallhealth.org)

For a comprehensive list of Federally  
Qualified Health Centers in NJ, please visit:  
[www.nj.gov/health/fhs/primarycare/fqhc/](http://www.nj.gov/health/fhs/primarycare/fqhc/)

---

# MEDICATION ASSISTED THERAPIES (MAT)

Opioid Detoxification and Maintenance Treatment Services

## Hunterdon County

### **BlueCrest Detox**

6 Minneakoning Road

Flemington, NJ 08822

*Type of Care: MAT, Residential*

**973-453-0929**

[bluecrestdetox.com](http://bluecrestdetox.com)

## Mercer County

### **Oaks Integrated Care**

314-316 E State Street

Trenton, NJ 08609

*Type of Care: Outpatient, Suboxone, Vivitrol*

2550 Brunswick Pike

Lawrenceville, NJ 08648

*Type of Care: Outpatient, Suboxone, Vivitrol*

**1-800-963-3377**

[oaksintcare.org](http://oaksintcare.org)

### **Iron Recovery and Wellness Center**

132/144 Perry Street

Trenton, NJ 08618

*Type of Care: Outpatient, Suboxone, Methadone*

**609-394-8988**

[ironwellness.org](http://ironwellness.org)

---

## **Trenton Treatment Services**

801 New York Ave  
Trenton, NJ 08638

**609-858-7870**

*Type of Care: Outpatient, Suboxone, Vivitrol, Methadone*

## **Hamilton Treatment Services**

3444 Quakerbridge Road  
Building 1A, Hamilton, NJ 08619

**609-838-9067**

*Type of Care: Outpatient, Intensive Outpatient, Subutex,  
Methadone*

[pinnacle-treatment.com](http://pinnacle-treatment.com)

---

## Middlesex County

### Center for Network Therapy

333 Cedar Avenue

Building B, Middlesex, NJ 08846

*Type of Care: Suboxone, Outpatient, Intensive Outpatient, Partial Care and Co-Occurring*

**732-484-9661**

[recoverycnt.com](http://recoverycnt.com)

### New Brunswick Counseling Center

320 Suydam Street

New Brunswick, NJ 08901

*Type of Care: Methadone Maintenance, Vivitrol, Intensive Outpatient, Women's Programs, Co-Occurring*

**732-246-4025**

### South Amboy Health Center

1 Main Street

South Amboy, NJ 08879

*Type of Care: Outpatient, Opioid Maintenance, Intensive Outpatient*

**732-952-1500**

## Monmouth County

### Discovery Institute

80 Conover Road

Marlboro, NJ 07746

*Type of Care: Suboxone, Librium, Outpatient*

**844-795-5384**

[discoverynj.org](http://discoverynj.org)



---

### **JSAS Healthcare, Inc.**

685 Neptune Boulevard Suite 101

Neptune, NJ 07753

*Type of Care: Methadone, Suboxone, Outpatient, Intensive Outpatient, MWRAP*

**732-988-8877**

[jsashealthcare.org](http://jsashealthcare.org)

### **Middletown Medical**

600 State Route 35

Middletown, NJ 07701

*Type of Care: Outpatient, Suboxone, Vivitrol, Methadone*

**732-696-7803**

[pinnacletreatment.com](http://pinnacletreatment.com)

### **Habit Opco Central Jersey Comprehensive Treatment Centers**

111 State Route 35

Cliffwood, NJ 07721

*Type of Care: Outpatient, Suboxone, Vivitrol, Methadone*

**888-429-3185**

[ctcprograms.com](http://ctcprograms.com)

## **Ocean County**

### **Ocean Medical Services**

2001 Route 37 East

Toms River, NJ 08753

*Type of Care: Methadone, Suboxone, Outpatient*

**732-288-9322**

[pinnacletreatment.com](http://pinnacletreatment.com)

---

## **Suboxone Services of Toms River**

2008 Route 37 East

Toms River, NJ 08753

*Type of Care: Suboxone, Subutex Outpatient*

**732-243-6926**

[pinnacle-treatment.com](http://pinnacle-treatment.com)

## **Lacey Treatment Services**

411 US Route 9 Suite 1

Lanoka Harbor, NJ 08734

*Type of Care: Methadone, Suboxone, Outpatient, Intensive Outpatient*

**609-357-4428**

[pinnacle-treatment.com](http://pinnacle-treatment.com)

## **Ocean Monmouth Care**

150 Brick Boulevard

Brick, NJ 08723

*Type of Care: Methadone, Suboxone, Detox, Outpatient, Intensive Outpatient*

**732-458-2180**

[pinnacle-treatment.com](http://pinnacle-treatment.com)

## **Suboxone Services of Manahawkin**

691 Mill Creek Road Building 9

Manahawkin, NJ 08050

*Type of Care: Suboxone, Subutex, Outpatient*

**732-232-2445**

[pinnacle-treatment.com](http://pinnacle-treatment.com)

## **Harbor MAT**

495 Jack Martin Blvd, Suite 6

Brick, NJ 08724

*Type of Care: Suboxone, Subutex, Outpatient*

**732-344-0596**

[harbormat.com](http://harbormat.com)

---

## **Suburban Health Clinic of Toms River**

10 Mule Road

Toms River, NJ 08755

*Type of Care: Suboxone, Subutex, Outpatient*

**732-797-9944**

[suburbanhealthclinic.com](http://suburbanhealthclinic.com)

## **Crossroads Treatment Centers**

4 Murray Grove Lane 2nd Floor

Lanoka Harbor, NJ 08734

*Type of Care: Outpatient, Methadone, Suboxone, Vivitrol*

**877-881-2960**

[crossroadstreatmentcenters.com](http://crossroadstreatmentcenters.com)

## **Somerset County**

### **Somerset Treatment Services**

118 West End Avenue

Somerville, NJ 08876

*Type of Care: Methadone, Suboxone, Intensive Outpatient for Men & Women, Co-Occurring, HIV Support Group*

**908-722-1232**

[somersetmentservices.org](http://somersetmentservices.org)

For further assistance finding MAT services contact:

- ReachNJ Services by dialing 1-844-REACHNJ (732-2465)
- NJ211 by dialing  
2-1-1 on a phone or at [nj211.org](http://nj211.org)
- [njsams.rutgers.edu/TreatmentDirectory/License](http://njsams.rutgers.edu/TreatmentDirectory/License)

---

# OUTPATIENT AND INTENSIVE OUTPATIENT TREATMENT SERVICES

## Hunterdon County

### **Freedom House Outpatient Services**

2004 State Route 31 Suite 9

Clinton, NJ 08809

*Type of Care: Outpatient, Intensive Outpatient, MAT*

**908-537-6043**

[freedomhousenj.org](http://freedomhousenj.org)

### **High Point Partial Care**

162 Broad Street

Flemington, NJ 08822

*Type of Care: Outpatient, Intensive Outpatient, Co-Occurring, Partial Care*

**908-788-5979**

[highpointpartialcare.com](http://highpointpartialcare.com)

### **Hunterdon Behavioral Health**

Hunterdon Medical Center

2100 Wescott Drive

Flemington, NJ 08822

*Type of Care: Outpatient, Intensive Outpatient, Co-Occurring, Inpatient Detox, Partial Care*

**908-788-6100**

[hunterdonhealth.org](http://hunterdonhealth.org)

---

### **The Center for Change and Recovery LLC**

56 Main Street

Suite 2 B

Flemington, NJ 08822

*Type of Care: Outpatient, Co-Occurring*

**732-667-5567**

### **Hunterdon Drug Awareness Program**

8 Main Street Suite 7

Flemington, NJ 08822

*Type of Care: Outpatient, Co-Occurring*

**908-788-1900**

### **Catholic Charities of Flemington**

6 Park Avenue

Flemington, NJ 08822

*Type of Care: Outpatient, IOP*

**908-782-7905**

## **Mercer County**

### **Oaks Integrated Care**

314-316 E. State Street

Trenton, NJ 08609

2550 Brunswick Pike

Lawrenceville, NJ 08648

*Type of Care: Outpatient, Intensive Outpatient*

**800-963-3377**

[oaksintcare.org](http://oaksintcare.org)

### **For My Baby and Me**

*Type of Care: Referral Services for Pregnant People Using Opioids*

**609-256-7801**

[formybabyandme.org](http://formybabyandme.org)

---

## **GenPsych**

932 State Road

Princeton, NJ 08540

*Type of Care: Outpatient, Partial Hospitalization, IOP,  
Children/Adolescent Programs*

**1-855-436-7792**

[genpsych.com](http://genpsych.com)

## **Trenton Treatment Services**

801 New York Ave

Trenton, NJ 08638

*Type of Care: Outpatient, Suboxone, Vivitrol, Methadone*

**609-858-7870**

[pinnacle-treatment.com](http://pinnacle-treatment.com)

## **Rescue Mission of Trenton**

98 Carroll Street

Trenton, NJ 08605

*Type of Care: Outpatient, Intensive Outpatient, Subutex,  
Methadone*

**609-695-1436**

[rescuemissionoftrenton.org](http://rescuemissionoftrenton.org)

## **Hamilton Treatment Services**

3444 Quakerbridge Road Building 1A

Hamilton, NJ 08619

*Type of Care: Outpatient, Intensive Outpatient, Subutex,  
Methadone*

**609-838-9067**

[pinnacle-treatment.com](http://pinnacle-treatment.com)

## **Iron Recovery and Wellness Center**

132/144 Perry Street

Trenton, NJ 08618

*Type of Care: Outpatient, Intensive Outpatient*

**609-394-8988**

[ironwellness.org](http://ironwellness.org)

---

## **Catholic Charities Diocese of Trenton**

39 North Clinton Avenue

Trenton, NJ 08609

*Type of Care: Outpatient, For My Baby and Me Program, Intensive Outpatient*

**609-394-9398**

[catholiccharitiestrenton.org](http://catholiccharitiestrenton.org)

## **Footprints to Recovery Addiction Treatment Centers**

3535 Quakerbridge Rd. Suite 300

Hamilton Township, NJ 08619

*Type of Care: Partial Care, Intensive Outpatient, Outpatient, and Telehealth*

**844-931-2845**

[footprintstorecovery.com](http://footprintstorecovery.com)

## **Another Door Opens Recovery Center**

1230 Parkway Avenue, Suite 105

Ewing, NJ 08628

*Type of Care: Outpatient, Intensive Outpatient, Partial Care, Co-Occurring*

**609-393-1219**

[adorc.org](http://adorc.org)

## **Phoenix Behavioral Health**

1014 Whitehead Rd Ext

Ewing Township, NJ 08638

*Type of Care: Outpatient, IOP, Partial Care, Partial Hospitalization*

**609-771-3777**

[recoverwithphoenix.com](http://recoverwithphoenix.com)

## **Summit Behavioral Health**

4065 Quakerbridge Road

Princeton Junction, NJ 08550

*Type of Care: Outpatient, Intensive Outpatient, Adolescent*

**888-995-6311**

[summithelps.com](http://summithelps.com)

---

## High Focus Centers

15 Princess Road

Lawrenceville, NJ 08648

*Type of Care: Outpatient, Partial Care, Intensive Outpatient*

**609-349-7626**

[highfocuscenters.com](http://highfocuscenters.com)

## Penn Medicine Princeton House Behavioral Health

741 Mount Lucas Road

Princeton, NJ 08540

*Type of Care: Co-Occurring, Children, Adolescent, Women's Programs, Men's Trauma Program, PHP, IOP, Outpatient*

1000 Herrontown Road

Princeton, NJ 08540

*Type of Care: Women's Programs Only \*only serves Women and Children\**

300 Clocktower Drive Suite 101

Hamilton, NJ 08690

*Type of Care: Co-Occurring, Children, Adolescent, Women's Programs, Men's Trauma Program, PHP, IOP, Outpatient*

**888-437-1610**

[pennmedicine.org](http://pennmedicine.org)

## Beachway

4 Princess Road Suite #208

Lawrenceville, NJ 08648

*Type of Care: Outpatient, Partial Care, Intensive Outpatient*

**844-722-8968**

[beachwaynj.com](http://beachwaynj.com)

## Corner House Behavioral Health

1 Monument Drive

Princeton, NJ 08540

*Type of Care: Outpatient, Intensive Outpatient*

**609-924-8018**

[cornerhousesite.com](http://cornerhousesite.com)



---

### **Creative Change Counseling Inc.**

3525 Quakerbridge Road Suite 2300

Hamilton, NJ 08619

*Type of Care: Outpatient, Intensive Outpatient*

**609-667-7353**

[creativechangeinc.org](http://creativechangeinc.org)

### **Wellness Recovery Center NJ**

231 Clarksville Road Suite 1

West Windsor, NJ 08550

*Type of Care: Outpatient, Intensive Outpatient*

**866-861-3449**

[wellnessrecoverynj.com](http://wellnessrecoverynj.com)

### **Reprive Recovery**

20 Scotch Road Floor 2

Ewing, NJ 08628

*Type of Care: Outpatient, Intensive Outpatient, PHP, Inpatient*

**609-669-0498**

[reprivetreatmentnj.com](http://reprivetreatmentnj.com)

### **Silver Linings Recovery Center**

251 Princeton Hightstown Road

East Windsor, NJ 08520

*Type of Care: Outpatient, Intensive Outpatient*

**855-960-3769**

[silverliningsrecoverycenter.com](http://silverliningsrecoverycenter.com)

### **The Counseling Center**

691 US-130 Suite 5

Robbinsville Twp, NJ 08691

*Type of Care: Outpatient, Intensive Outpatient, MAT*

**609-806-5083**

[robbinsvillecounselingcenter.com](http://robbinsvillecounselingcenter.com)

---

## **The Living Room**

239 Wall Street

Princeton, NJ 08540

*Type of Care: Outpatient, IOP, and Partial Care*

**732-327-1066**

[livingroomnj.com](http://livingroomnj.com)

## **Middlesex County**

### **Center for Network Therapy, LLP**

333 Cedar Avenue Building B

Middlesex, NJ 08846

*Type of Care: Outpatient, Withdrawal Management, Ambulatory Detox*

**732-484-9661**

[recoverycnt.com](http://recoverycnt.com)

### **Clear Conscience Counseling, LLC**

2509 Park Ave. Suite 2B,

South Plainfield, NJ 07080

*Type of Care: Outpatient and IOP*

**973-434-7830**

[www.clearconsciencenj.com](http://www.clearconsciencenj.com)

### **Diamond Counseling LLC**

2186 North State Route 27 Suite 1C

North Brunswick, NJ 08902

*Type of Care: Outpatient, IOP, and Partial Care*

**732-248-1805**

[diamondcounselingcenter.net](http://diamondcounselingcenter.net)

### **Innerspace Counseling, LLC**

2433 Route 516

Old Bridge, NJ 08857

*Type of Care: IOP and PHP*

**732-332-8270**

[innerspacecounseling.com](http://innerspacecounseling.com)

---

### **Center for Great Expectations**

984 Bergen Avenue

North Brunswick, NJ 08902

*Type of Care: Outpatient, Intensive Outpatient, Women's Programs*

**732-993-6403**

[cge-nj.org](http://cge-nj.org)

### **JFK Center for Behavioral Health**

65 James Street

Edison, NJ 08818

*Type of Care: Outpatient and IOP*

**732-321-7189**

[hackensackmeridianhealth.org](http://hackensackmeridianhealth.org)

### **Journey to Wellness Inc.**

220 Market Street #2

Perth Amboy, NJ 08861

*Type of Care: Outpatient, Intensive Outpatient*

**732-709-7440**

[treatmentnj.net](http://treatmentnj.net)

### **Laszlo Center 4 Hope and Healing**

367 Old Bridge Turnpike

East Brunswick, NJ 08816

*Type of Care: Outpatient*

**732-794-3629**

[laszlo4therapy.com](http://laszlo4therapy.com)

### **New Brunswick Counseling Center**

320 Suydam Street

New Brunswick, NJ 08901

*Type of Care: Outpatient, Intensive Outpatient*

**732-246-4025**

[nbcounselingcenter.org](http://nbcounselingcenter.org)

---

### **More Life Recovery**

280 Main Street

Metuchen, NJ 08840

*Type of Care: Outpatient, Intensive Outpatient, Partial Care*

**888-825-8689**

[moreliferecoverycenter.com](http://moreliferecoverycenter.com)

### **Princeton House Behavioral Health**

1460 Livingston Avenue Building 100

North Brunswick, NJ 08902

*Type of Care: Outpatient, Intensive Outpatient, Co-Occurring, Men's Programs, Women's Programs*

**888-437-1610**

[pennmedicine.org](http://pennmedicine.org)

### **SOBA New Jersey Drug and Alcohol Rehab**

104 Bayard Street

New Brunswick, NJ 08901

*Type of Care: Outpatient, Intensive Outpatient*

**732-313-3776**

[sobanewjersey.com](http://sobanewjersey.com)

### **Step Inc. Striving to Empower People**

40 Woodbridge Avenue

Sewaren, NJ 07077

*Type of Care: Outpatient, Intensive Outpatient*

**732-636-1931**

[stepnj40.com](http://stepnj40.com)

### **Positive Reset Mental Health Clinic**

6 Cornwall Ct Suite B

East Brunswick, NJ 08816

*Type of Care: Outpatient, Intensive Outpatient*

**732-955-4141**

[positivereset.com](http://positivereset.com)

---

## **Clarity Treatment Center**

262 State Street

Perth Amboy, NJ 08861

*Type of Care: Outpatient, Intensive Outpatient*

**732-442-3535**

## **First Step Counseling Services**

16 Wernick Place

Metuchen, NJ 08840

*Type of Care: Outpatient, Intensive Outpatient*

**732-549-0401**

[firststepmetuchen.com](http://firststepmetuchen.com)

## **Right Choice Recovery**

12 Stults Road, Suite 137

Dayton, NJ 08810

*Type of Care: Outpatient, Intensive Outpatient, Partial Care*

**732-722-5185**

[rightchoicerecoverynj.com](http://rightchoicerecoverynj.com)

## **CORE Outpatient Services**

540 Bordentown Avenue Suite 203

South Amboy, NJ 08879

*Type of Care: Outpatient, Intensive Outpatient, MAT*

**732-963-2626**

## **Virtue Care Services Inc.**

499 Plainfield Avenue Suite #1A 2B

Edison, NJ 08817

*Type of Care: Outpatient, Intensive Outpatient*

**732-985-5300**

---

## **South Amboy Health Center**

1 Main Street

South Amboy, NJ 08879

*Type of Care: Outpatient, Intensive Outpatient, MAT*

**732-952-1500**

## **The Passion Care Center**

187 Fayette Street

Perth Amboy, NJ 08861

*Type of Care: Outpatient, Intensive Outpatient, Partial Care*

**732-410-7102**

[thepassioncarecenter.com](http://thepassioncarecenter.com)

## **Breath of Life Counseling Services**

24 North Third Avenue Suite 203E

Highland Park, NJ 08904

*Type of Care: Outpatient, Intensive Outpatient, Inpatient*

**732-289-6008**

[breathoflifecounseling.com](http://breathoflifecounseling.com)

## **Catholic Charities**

288 Rues Lane

East Brunswick, NJ 08816

*Type of Care: Outpatient, Intensive Outpatient*

**732-257-6100**

[ccdom.org](http://ccdom.org)

## **The Counseling Center**

127 Union Avenue, Suite #1

Middlesex, NJ 08846

*Type of Care: Outpatient, Intensive Outpatient, MAT*

**732-629-9510**

[middlesexcounseling.com](http://middlesexcounseling.com)

---

## **The Center for Therapy and Counseling Services**

32 Main Street

Edison, NJ 08837

*Type of Care: Outpatient*

758 US-18 #110

East Brunswick, NJ 08816

*Type of Care: Outpatient*

**732-254-0600**

[centerfortherapy.net](http://centerfortherapy.net)

## **The Counseling Center**

1100 Cornwall Road Suite #111

Monmouth Junction, NJ 08852

*Type of Care: Outpatient, Intensive Outpatient, MAT*

**848-217-5142**

[monmouthjunctioncounseling.com](http://monmouthjunctioncounseling.com)

## **RCA at Raritan Bay**

901 Ernston Road

South Amboy, NJ 08879

*Type of Care: Outpatient, Intensive Outpatient, Inpatient, MAT*

**732-585-1815**

[recoverycentersofamerica.com](http://recoverycentersofamerica.com)

## **Guardian Recovery**

152 Livingston Avenue

New Brunswick, NJ 08901

*Type of Care: Intensive Outpatient, MAT*

**888-483-1517**

[guardianrecovery.com](http://guardianrecovery.com)

## **New Beginnings Treatment Center**

1460 Livingston Avenue Bldg 400 Room 301-303

New Brunswick, NJ 08902

*Type of Care: Intensive Outpatient, MAT*

**833-787-9718**

---

## Monmouth County

### **Advanced Health and Education, LLC**

3 Corbett Way

Eatontown, NJ 07724

*Type of Care: Outpatient, Intensive Outpatient, Partial Care/Co-Occurring*

**844-302-8605**

[advhealth.com](http://advhealth.com)

### **Community YMCA Family Services**

166 Main Street

Matawan, NJ 07747

*Type of Care: Outpatient, Intensive Outpatient*

**732-290-9040**

[ymcanj.org](http://ymcanj.org)

### **Central New Jersey Comprehensive Treatment Center**

111 Route 35

Cliffwood, NJ 07721

*Type of Care: Outpatient, Intensive Outpatient*

**855-565-3839**

[ctcprograms.com](http://ctcprograms.com)

### **CPC Integrated Health**

Multiple Locations throughout the county

*Type of Care: Outpatient, Intensive Outpatient*

**800-250-9811**

[cpcintegratedhealth.org](http://cpcintegratedhealth.org)

### **Community Care Behavioral Health**

3443 Route 9 North

Freehold, NJ 07728

*Type of Care: Outpatient*

**732-462-5553**

[communitycare.us](http://communitycare.us)



---

## **New Hope**

80 Conover Road

Marlboro, NJ 07746

*Type of Care: Admin Office, Inpatient, MAT*

Station A 2-2 Monmouth Avenue

Freehold, NJ 07728

*Types of Care: Outpatient*

**800-705-4673**

[newhopeibhc.org](http://newhopeibhc.org)

## **Extracare Counseling Centers**

141 Route 34, P.O. Box 506

Matawan, NJ 07747

*Type of Care: Outpatient*

**732-721-3835**

[extracarehealth.com](http://extracarehealth.com)

## **Comprehensive Counseling Center**

2340 U.S. Highway 9

Howell Township, NJ 07731

415 State Route Suite 103

Colts Neck, NJ 07722

*Type of Care: Outpatient*

**732-987-9770**

[cccmonmouth.com](http://cccmonmouth.com)

## **Jersey Shore University Medical Center**

61 Davis Avenue Suite 60-02

Neptune, NJ 07753

*Type of Care: Outpatient*

**732-643-4400**

[hackensackmeridianhealth.org](http://hackensackmeridianhealth.org)

---

### **Discovery Institute**

80 Conover Road  
Marlboro, NJ 07746

*Type of Care: Outpatient, Intensive Outpatient, Short Term, Long Term, Residential*

**844-795-5384**

[discoverynj.org](http://discoverynj.org)

### **High Focus Treatment Centers**

6 Paragon Way Suite 104  
Freehold, NJ 07728

*Type of Care: Outpatient, Psychiatric, Co-Occurring, Substance Use*

**732-303-9900**

[highfocuscenters.com](http://highfocuscenters.com)

### **New Hope Foundation, Inc.**

Station A 2-2 Monmouth Avenue  
Freehold, NJ 07728

190 Chelsea Avenue  
Long Branch, NJ 07740

*Type of Care: Adults, Adolescents, Outpatient, Intensive Outpatient*

**732-308-0113**

[newhopeibhc.org](http://newhopeibhc.org)

### **Jewish Family and Children's Services of Monmouth County**

705 Summerfield Avenue  
Asbury Park, NJ 07712

*Type of Care: Outpatient, Intensive Outpatient*

**732-774-6886**

[jfcsmommouth.org](http://jfcsmommouth.org)

### **Seacrest Recovery Center**

162 Main Street  
Eatontown, NJ 07724

*Type of Care: Outpatient, IOP, Partial Care*

**833-610-1174**

[seacrestrecoverycenternj.com](http://seacrestrecoverycenternj.com)

---

### **Princeton House Behavioral Health**

615 Hope Road Building 1

Eatontown, NJ 07724

*Type of Care: Woman's Program, Trauma & Addiction, Intensive Outpatient and Partial Hospitalization*

**888-437-1610**

[princetonmedicine.org](http://princetonmedicine.org)

### **Freedom Recovery Center**

143 Route 33

Manalapan, NJ 07726

*Type of Care: IOP and PHP*

**844-910-1237**

[freedomrecovery.com](http://freedomrecovery.com)

### **Stress Care of NJ, LLC**

4122 Route 516

Matawan, NJ 07747

500 Park Avenue

Manalapan, NJ 07726

*Type of Care: Outpatient, Intensive Outpatient, Partial Care*

**732-679-4500**

[stresscareclinic.com](http://stresscareclinic.com)

### **The Counseling Center**

4345 Route 9

Freehold, NJ 07728

*Type of Care: Outpatient, Intensive Outpatient, Partial Care/Co-Occurring*

**732-515-4187**

[freeholdcounselingcenter.com](http://freeholdcounselingcenter.com)

---

### **JSAS Healthcare, Inc.**

685 Neptune Blvd Suite 101

Neptune, NJ 07753

*Type of Care: Outpatient, Co-Occuring, MAT, Groups*

**732-988-8877**

[jsashealthcare.org](http://jsashealthcare.org)

### **Center for Network Therapy**

20 Gibson Place Suite 103

Freehold, NJ 07728

*Type of Care: Outpatient, IOP, Partial Care*

**732-484-9661**

[recoverycnt.com](http://recoverycnt.com)

### **RESA Treatment Center**

199 Main Street Suite 2A

Keansburg, NJ 07734

*Type of Care: Outpatient, IOP*

**732-495-1474**

[resatreatmentcenter.com](http://resatreatmentcenter.com)

### **Riverview Medical Center**

661 Shrewsbury Avenue

Shrewsbury, NJ 07702

*Type of Care: Outpatient, IOP*

**732-345-3400**

[hackensackmeridianhealth.org](http://hackensackmeridianhealth.org)

### **Alternative Counseling Method**

201 Hwy 35

Neptune, NJ 07753

*Type of Care: Outpatient, IOP*

**732-866-1700**

[alternativecounselingmethod.godaddysites.com](http://alternativecounselingmethod.godaddysites.com)

---

### **Blue Star Recovery**

1 Bethany Road Bldg 3 Suite 43

Hazlet, NJ 07730

*Type of Care: Outpatient, IOP*

**732-479-3599**

[bluestarrecovery.com](http://bluestarrecovery.com)

### **Gateway Day Treatment Program**

1 Center Street

Ocean Township, NJ 07712

*Type of Care: IOP and Partial Care*

**732-922-0591**

[gatewaydaytreatment.com](http://gatewaydaytreatment.com)

### **Harbor Wellness and Recovery**

2139 Center Street NJ 35 Suite 120

Holmdel, NJ 07733

*Type of Care: Outpatient, IOP, and Partial Care*

**855-698-3554**

[harborwellnesscenter.org](http://harborwellnesscenter.org)

### **Rebirth Recovery Center**

2100 Corlies Avenue Suite 6

Neptune City, NJ 07753

*Type of Care: Outpatient, IOP, and PHP*

**640-999-8398**

[rebirthrecoverycenter.com](http://rebirthrecoverycenter.com)

### **Morning Glory Behavioral Health**

645 Neptune Blvd

Neptune, NJ 07753

*Type of Care: Outpatient*

**732-918-9905**

[mgbhpc.com](http://mgbhpc.com)

---

### **Preferred Behavioral Health Group**

40 Christopher Way

Eatontown, NJ 07724

*Type of Care: Outpatient*

**732-367-4700**

[preferredbehavioral.org](http://preferredbehavioral.org)

### **Relevance**

61 W Main Street

Freehold, NJ 07728

*Type of Care: Outpatient, IOP, MAT*

**908-987-3664**

[relevancerecovery.com](http://relevancerecovery.com)

### **Unity Place**

1075 Stephenson Avenue Suite C

Oceanport, NJ 07757

*Type of Care: Outpatient, IOP*

**848-208-2636 ext. 307**

[unityplacemc.com](http://unityplacemc.com)

## **Ocean County**

### **RWJBarnabas Health Behavioral Health Center**

1691 Route 9

Toms River, NJ 08754

*Type of Care: Outpatient, IOP*

**732-914-1688**

[rwjbh.org](http://rwjbh.org)

### **GenPsych**

940 Cedar Bridge Avenue

Brick, NJ 08723

*Type of Care: Outpatient, Intensive Outpatient, Dual Diagnosis,  
Partial Hospitalization, Eating Disorders*

**1-855-436-7792**

[genpsych.com](http://genpsych.com)

---

## **Integrity House**

310 Main Street

Toms River, NJ 08753

*Type of Care: Outpatient, IOP, Residential*

**973-623-0600**

[integrityhouse.org](http://integrityhouse.org)

## **The Counseling Center**

1198 Lakewood Road Suite #102

Toms River, NJ 08753

*Type of Care: Outpatient, IOP, PHP, MAT*

**732-605-6364**

[tomsrivercounselingcenter.com](http://tomsrivercounselingcenter.com)

## **Lacey Treatment Services**

411 Route 9 Suite 1

Lanoka Harbor, NJ 08734

*Type of Care: Outpatient, IOP, MAT*

**609-757-8246**

[pinnacletreatment.com](http://pinnacletreatment.com)

## **Lakewood Community Services Corporation**

Lakewood, NJ 08701

*Type of Care: Outpatient*

**732-886-6964**

[thelcsc.org](http://thelcsc.org)

## **Ocean Insight Center**

1749 Hooper Avenue Suite 202

Toms River, NJ 08753

*Type of Care: Outpatient, IOP*

**732-930-1020**

[oceaninsightcenter.com](http://oceaninsightcenter.com)

---

## **Preferred Behavioral Health Group**

1500 Route 88

Brick, NJ 08723

*Type of Care: Outpatient for Children and Families*

700 Airport Road

Lakewood, NJ 08701

*Type of Care: Outpatient, Intensive Outpatient, Partial Care, Senior Program*

1191 Lakewood Road

Toms River, NJ 08753

*Type of Care: Substance Use*

591 Lakehurst Road

Toms River, NJ 08755

*Type of Care: Adolescent Intensive Outpatient, Adolescent Partial Care, Healthy Families, Mobile Response*

848 West Bay Avenue Suite C-1

Barnegat, NJ 08005

**732-367-4700**

[preferredbehavioral.org](http://preferredbehavioral.org)

## **The Center at Advanced Behavioral Care Services**

501 Prospect Street Building 1A Suite 8

Lakewood, NJ 08701

*Type of Care: Outpatient, Intensive Outpatient, Partial Care/Co-Occurring*

**732-961-9666**

[advancedbehavioral.com](http://advancedbehavioral.com)

## **Taylor Care Adult Behavioral Health**

213 West Main Street

Tuckerton, NJ 08087

*Type of Care: Outpatient, Partial Care*

**609-879-2233**

[taylorcare.com](http://taylorcare.com)



---

## **Ocean Monmouth Care**

150 Brick Boulevard

Lakewood, NJ 08701

*Type of Care: Outpatient, MAT*

**732-889-7804**

[pinnacle-treatment.com](http://pinnacle-treatment.com)

## **Ocean Medical Services**

2001 State Route 37

Toms River, NJ 08753

*Type of Care: Outpatient, MAT*

**732-605-4994**

[pinnacle-treatment.com](http://pinnacle-treatment.com)

## **Overcome**

101 Prospect Street, Suite 210

Lakewood, NJ 08701

*Type of Care: Outpatient, MAT*

**732-505-7261**

[overcomenj.com](http://overcomenj.com)

## **Bright Harbor Healthcare**

multiple locations

*Type of Care: Outpatient, Intensive Outpatient, Partial Care/Co-Occurring*

**732-349-5550**

[brighthouse.org](http://brighthouse.org)

## **Quantum**

144 Mill Street

South Toms River, NJ 08757

*Type of Care: Outpatient, Intensive Outpatient, Partial Care/Co-Occurring*

**609-993-0733**

[qtreatment.com](http://qtreatment.com)

---

### **Avisa**

25 W Water Street

Toms River, NJ 08753

*Type of Care: Outpatient, MAT*

**732-858-0302**

[avisarecovery.com](http://avisarecovery.com)

### **Stress Care of NJ**

111 W Water Street

Toms River, NJ 08753

*Type of Care: Outpatient, Intensive Outpatient, Partial Care*

**732-679-4500**

[stresscareclinic.com](http://stresscareclinic.com)

### **Forge Health**

10 Allen Street, Suite 4A

Toms River, NJ 08753

*Type of Care: Outpatient, Intensive Outpatient*

**888-224-7312**

[forgehealth.com](http://forgehealth.com)

### **Suburban Health Clinic**

10 Mule Road

Toms River, NJ 08755

*Type of Care: Outpatient, Intensive Outpatient, MAT*

**732-797-9944**

[suburbanhealthclinic.com](http://suburbanhealthclinic.com)

### **AGAPE Counseling Services**

815 Route 9

Lanoka Harbor, NJ 08734

*Type of Care: Intensive Outpatient*

**609-242-0086**

[agapenj.org](http://agapenj.org)

---

## Somerset County

### **Hackensack Meridian Health Carrier Clinic**

252 County Route 601

Belle Mead, NJ 08502

*Type of Care: Outpatient, Intensive Outpatient, Detox, Children, Adolescent, Inpatient, Dual Diagnosis*

**800-933-3579**

[hackensackmeridianhealth.org](http://hackensackmeridianhealth.org)

### **Catholic Charities Diocese of Metuchen**

540 Route 22 East

Bridgewater, NJ 08807

*Type of Care: Outpatient, Intensive Outpatient*

**908-722-1881**

[ccdom.org](http://ccdom.org)

### **Family Community Service**

339 West Second Street

Bound Brook, NJ 08805

*Type of Care: Outpatient*

**732-356-1082**

[fcssomerset.org](http://fcssomerset.org)

### **GenPsych**

380 Foothill Road

Bridgewater, NJ 08807

*Type of Care: Outpatient, IOP, PHP, MAT, Children, Adolescent*

**1-855-436-7792**

[genpsych.com](http://genpsych.com)

### **Stress Care of NJ**

61 Veronica Avenue

Somerset, NJ 08873

*Type of Care: Outpatient, Intensive Outpatient, Partial Care*

**732-679-4500**

[stresscareclinic.com](http://stresscareclinic.com)

---

### **Guided Life Structures**

50 Division Street 3<sup>rd</sup> Floor

Somerville, NJ 08876

*Type of Care: Outpatient, Intensive Outpatient, Women's Programs*

**908-704-0011**

[guidedlifestructures.org](http://guidedlifestructures.org)

### **High Focus Treatment Center**

3322 US 22 West

Suite 1403

Branchburg, NJ 08876

*Type of Care: Outpatient, Intensive Outpatient, PHP,*  
**732-474-7447**

[highfocuscenters.com](http://highfocuscenters.com)

### **Somerset Treatment Services**

118 West End Avenue

Somerville, NJ 08876

*Type of Care: Outpatient, Intensive Outpatient, IOP, MAT*  
**908-722-1232**

[stscares.org](http://stscares.org)

### **Rubicon Recovery Center**

40 Stirling Road Suite 208

Watchung, NJ 07069

*Type of Care: Outpatient, Intensive Outpatient, IOP, PHP*  
**908-332-0767**

[rubiconrecoverycenter.com](http://rubiconrecoverycenter.com)

### **Green Springs Wellness**

390 Amwell Road Suite 504

Hillsborough, NJ 08844

*Type of Care: Outpatient, IOP, PHP*  
**732-798-0084**

[njtreatmentcenter.com](http://njtreatmentcenter.com)

---

### **New Jersey Behavioral Health**

120 Old Camplain Road

Hillsborough Township, NJ 08844

*Type of Care: Outpatient, IOP, Partial Care*

**732-751-4750**

[newjerseybhc.com](http://newjerseybhc.com)

### **Richard Hall Community Health and Wellness Center**

500 N Bridge Street

Bridgewater, NJ 08807

*Type of Care: Outpatient Counseling/Support Services*

**908-725-2800**

[somersetcountynj.gov](http://somersetcountynj.gov)

---

# RESIDENTIAL / TRANSITIONAL HOUSING

## Hunterdon County

### **Anderson House**

532 County Road 523

Whitehouse Station, NJ 08889

*Type of Care: Women Only Halfway House, Residential/Transitional Housing*

**908-534-5818**

[turningpointnj.org](http://turningpointnj.org)

### **Good News Home for Women**

33 Bartles Corner Road

Flemington, NJ 08822

*Type of Care: Women Only Halfway House, Residential/Transitional Housing*

**908-806-4220**

[www.goodnewshome.org](http://www.goodnewshome.org)

### **BlueCrest Detox**

6 Minneakoning Road

Flemington, NJ 08822

*Type of Care: MAT, Residential*

**973-453-0929**

[bluecrestdetox.com](http://bluecrestdetox.com)

### **Freedom House**

2004 State Route 31 Suite 9

Clinton, NJ 08809

*Type of Care: Residential Men and Women, Long Term Housing*

**908-537-6043**

[freedomhousenj.org](http://freedomhousenj.org)

---

## Middlesex County

### **Veritas Recovery Center**

540 Bordentown Avenue

South Amboy, NJ 08879

*Type of Care: Residential*

**732-721-1000**

[veritasrecoverycenter.com](http://veritasrecoverycenter.com)

### **Recovery Centers of America at Raritan Bay**

901 Ernston Road

South Amboy, NJ 08879

*Type of Care: Inpatient, MAT*

**732-585-1815**

[recoverycentersofamerica.com](http://recoverycentersofamerica.com)

### **SOBA New Jersey Drug and Alcohol Rehab**

Various locations throughout Middlesex County

*Type of Care: Residential, MAT, Outpatient, IOP*

**732-313-3776**

[sobanewjersey.com](http://sobanewjersey.com)

### **Damon House**

105 Joyce Kilmer Avenue

New Brunswick, NJ 08901

*Type of Care: Residential*

**732-828-3988**

[damonhouse.org](http://damonhouse.org)

## Monmouth County

### **Discovery Institute**

80 Conover Road

Marlboro, NJ 07746

*Type of Care: Residential Treatment, Co-Occurring, Detox*

**844-795-5384**

[discoverynj.org](http://discoverynj.org)

---

## **New Hope**

80 Conover Road

Marlboro, NJ 07746

*Type of Care: Residential*

**800-705-4673**

[newhopeibhc.org](http://newhopeibhc.org)

## **Mercer County**

### **We Level Up**

276 Bakers Basin Road

Lawrence Township, NJ 08648

*Type of Care: Residential*

**201-389-9370**

[welevelupnj.com](http://welevelupnj.com)

### **Rescue Mission of Trenton**

98 Carroll Street

Trenton, NJ 08605

*Type of Care: Residential*

**609-695-1436**

[rescuemissionoftrenton.org](http://rescuemissionoftrenton.org)

## **Ocean County**

### **Evolve Recovery Center**

16 Whitesville Road Suite C

Toms River, NJ 08753

*Type of Care: Residential*

**732-629-9672**

[evolverecoverytomsriver.com](http://evolverecoverytomsriver.com)



---

## Somerset County

### Center for Great Expectations

19B Dellwood Lane

Somerset, NJ 08873

*Type of Care: Women & Children Residential / Halfway House*

**732-247-7003**

[cge-nj.org](http://cge-nj.org)

### Blake Recovery Center at Carrier Clinic

252 County Road 601

Belle Mead, NJ 08502

*Type of Care: Residential, Outpatient*

**866-266-1616**

[hackensackmeridianhealth.org](http://hackensackmeridianhealth.org)

For a complete listing of Oxford Houses in the  
State of NJ, go to: [njaxfordhouse.org](http://njaxfordhouse.org)  
*Men's & Women's Self-Monitored Transitional  
Housing*

For a listing of Homeless Shelters  
in the State of New Jersey, go to:  
[homelessshelterdirectory.org/state/new\\_jersey](http://homelessshelterdirectory.org/state/new_jersey)

---

# SMOKING CESSATION

Mom's Quit Connection for Families

888-545-5191

[momsquit.com](http://momsquit.com)

New Jersey Quitline

866-657-8677

[www.njquitline.org](http://www.njquitline.org)

Nicotine and Tobacco Recovery Program

833-795-QUIT (7848)

[www.rwjbh.org/treatment-care/institute-for-prevention-and-recovery/programs](http://www.rwjbh.org/treatment-care/institute-for-prevention-and-recovery/programs)

Rutgers Tobacco Dependence Program

732-235-8222

[cts.rutgers.edu/tobacco-dependence-program/](http://cts.rutgers.edu/tobacco-dependence-program/)

Tobacco Free NJ

732-367-0611

[www.tobaccofreenj.com](http://www.tobaccofreenj.com)



---

# SELF HELP GROUPS FOR PEOPLE WITH SUBSTANCE USE

Narcotics Anonymous (NA)  
Meetings / Information: 732-933-0462  
Helpline: 800-992-0401  
[nanj.org](http://nanj.org)

Alcoholics Anonymous (AA)  
[www.nnjaa.org/nj-aa/](http://www.nnjaa.org/nj-aa/)

NJ Connect for Recovery  
855-652-3737  
[www.njconnectforrecovery.org](http://www.njconnectforrecovery.org)

SMART Recovery  
[www.smartrecovery.org](http://www.smartrecovery.org)



---

# SELF HELP GROUPS FOR FAMILIES AND FRIENDS OF THOSE WHO USE SUBSTANCES

Nar-Anon Family Groups

877-424-4491

[naranonofnj.org](http://naranonofnj.org)

Al-Anon / Alateen

888-944-5678

[nj-al-anon.org](http://nj-al-anon.org)

NJ Connect for Recovery

855-652-3737

[www.njconnectforrecovery.org](http://www.njconnectforrecovery.org)

SMART Recovery

[smartrecovery.org](http://smartrecovery.org)

Central NJ Chapter Grief Recovery After a Substance Passing (GRASP)

908-507-1008

[grasphelp.org](http://grasphelp.org)



---

# DIDN'T FIND WHAT YOU WERE LOOKING FOR?

Check out the NJ Resource Net system and NJ211 for assistance finding resources.

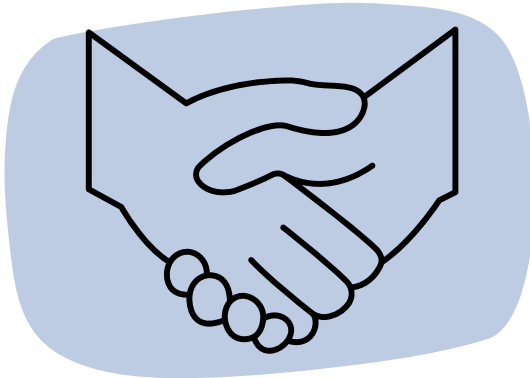
NJ Resource Net

<https://www.njresourcenet.org/>

NJ211

Dial 2-1-1 over the phone to link with someone

<https://www.nj211.org/>



---

This guide is for informational purposes only and does not constitute medical advice. CJFHC does not endorse any of the providers listed in this guide.

Notice a resource missing or a change we missed?  
Please contact Erica McPolin at [emcpolin@cjfhc.org](mailto:emcpolin@cjfhc.org).

