



# CJFHC

Central Jersey  
Family Health Consortium

# RESOURCE GUIDE FOR PARENTING & PREGNANT PEOPLE WITH SUBSTANCE USE

---

A GUIDE FOR PROFESSIONALS IN NEW JERSEY

Perinatal Addictions Prevention Project

30 Silverline Drive  
Second Floor, Suite 1  
North Brunswick, NJ 08902  
732-947-5437  [www.cjfhc.org](http://www.cjfhc.org)

# CONTENTS

Maternal and Child Health Consortia	3
Boards of Social Services	4
Diagnostic Centers for FAS/FASD	6
Domestic Violence Support	7
Connecting NJ	8
Federally Qualified Health Centers (FQHC)	9
Medication Assisted Therapies (MAT)	13
Outpatient & Intensive Outpatient Treatment Services	18
Residential / Transitional Housing	30
Smoking Cessation	34
Self Help Groups	35
General Assistance	37

---

# PERINATAL ADDICTIONS PREVENTION PROJECT

## Our Mission Statement

To improve the wellbeing of pregnant people and people of childbearing age affected by the challenges of substance use.

Our goal is to ensure the health and wellbeing of every parent and child.

The Perinatal Addictions Prevention Project:

- Provide prevention education to professionals & consumers on the impact of alcohol, tobacco, and other drugs on pregnant people and their children.
- Promote the use of the Perinatal Risk Assessment (PRA) to Prenatal Care Providers.
- Provide resources and referrals for people capable of pregnancy affected by substance use.
- Collaborate with municipal, county, and state alliances, task forces, coalitions, and councils to reduce and prevent substance use.

### Central Jersey Family Health Consortium (CJFHC)

30 Silverline Drive  
Second Floor, Suite 1  
North Brunswick, NJ 08902  
732-937-5437 ext. 135  
[cjfhc.org](http://cjfhc.org)



### Partnership for Maternal Child Health of Northern New Jersey (PMCHNNJ)

50 Park Place  
Suite 700  
Newark, NJ 07102  
201-876-8900 ext. 228  
[partnershipmch.org](http://partnershipmch.org)



### Southern New Jersey Perinatal Cooperative (SNJPC)

2500 McClellan Avenue  
Suite 250  
Pennsauken, NJ 08109  
856-675-5310  
[snjpc.org](http://snjpc.org)



---

# BOARDS OF SOCIAL SERVICES

## **Hunterdon County Division of Social Services**

6 Gauntt Place  
PO Box 2900  
Flemington, NJ 08822  
Phone 908-788-1300  
Fax 908-806-4588  
[co.hunterdon.nj.us/615/Social-Services](http://co.hunterdon.nj.us/615/Social-Services)

## **Mercer County Board of Social Services**

PO Box 1450  
Trenton, NJ 08650  
Phone 609-989-4320  
Fax 609-394-6638  
[mcboss.org](http://mcboss.org)

## **Middlesex County Board of Social Services**

181 How Lane  
PO Box 509  
New Brunswick, NJ 08901  
Phone 732-745-3500  
Fax 732-745-4558  
[middlesexsocialservices.com](http://middlesexsocialservices.com)

## **Monmouth County Division of Social Services**

3000 Kozloski Road  
Freehold, NJ 07728  
Phone 732-431-6000  
Fax 732-431-6266  
[co.monmouth.nj.us/page.aspx?ID=163](http://co.monmouth.nj.us/page.aspx?ID=163)

---

## **Ocean County Board of Social Services**

1027 Hooper Avenue

PO Box 547

Toms River, NJ 08753

Phone 732-349-1500

Fax 732-244-8075

[co.ocean.nj.us/SocialServices/](http://co.ocean.nj.us/SocialServices/)

## **Somerset County Board of Social Services**

73 East High Street

PO Box 936

Somerville, NJ 08876

Phone 908-526-8800

Fax 908-707-1941

[www.co.somerset.nj.us/government/affiliated-agencies/social-services](http://www.co.somerset.nj.us/government/affiliated-agencies/social-services)

---

# DIAGNOSTIC CENTERS FOR FETAL ALCOHOL SPECTRUM DISORDERS (FASD)

## Children's Specialized Hospital

Multiple Locations Available

**888-244-5373**

[www.rwjbh.org/childrens-specialized-hospital/](http://www.rwjbh.org/childrens-specialized-hospital/)

## John F. Kennedy Medical Center Child Evaluation Center

2050 Oak Tree Road

Edison, NJ 08820

**732-548-7610**

## Jersey Shore University Medical Center Child Evaluation Center & FASD Center

81 Davis Ave

Suite 4

Neptune, NJ 07753

**732-776-4178 ext. 2**



For a comprehensive list of Child Evaluation Centers, please visit:  
[www.nj.gov/health/fhs/specialpediatrics/child-evaluation/contacts/](http://www.nj.gov/health/fhs/specialpediatrics/child-evaluation/contacts/)

---

# DOMESTIC VIOLENCE SUPPORT

## Hunterdon County

### Safe in Hunterdon

47 East Main Street  
Flemington, NJ 08822  
908-809-0019  
[safeinhunterdon.org](http://safeinhunterdon.org)

## Mercer County

### Womanspace

1530 Brunswick Avenue  
Lawrenceville, NJ 08648  
800-572-SAFE (7233)  
[womanspace.org](http://womanspace.org)

## Middlesex County

### Women Aware

250 Livingston Avenue  
New Brunswick, NJ 08901  
732-249-4504  
[womenaware.net](http://womenaware.net)

## Monmouth County

### 180 Turning Lives Around

1 Bethany Road  
Hazlet, NJ 07730  
888-843-9262  
[180nj.org](http://180nj.org)

## Ocean County

### Dottie's House

PO Box 4002  
Brick Township, NJ 08723  
732-262-2009  
[dottieshouse.org](http://dottieshouse.org)

### Providence House

88 Schoolhouse Road  
Whiting, NJ 08759  
732-244-8259 or 800-246-8910  
[catholiccharitiestrenton.org](http://catholiccharitiestrenton.org)

## Somerset County

### Safe and Sound Somerset

427 Homestead Road  
Suite 2  
Hillsborough, NJ 08844  
908-359-0003  
[safe-sound.org](http://safe-sound.org)

For a comprehensive list of Domestic Violence Direct Services in NJ, please visit:  
[www.nj.gov/dcf/women/domestic/](http://www.nj.gov/dcf/women/domestic/)

---

# CONNECTING NJ

## What is Connecting NJ?

Connecting NJ connects people who are pregnant and/or parenting, children, and families to community resources and services that address their needs.

## What type of information can Connecting NJ provide you with?

Connecting NJ can help you find resources for various needs such as housing, health insurance, child care, and transportation. We can also connect you with free home visiting programs, case management, WIC, and other programs in your area.

**For more information, contact Connecting NJ directly.**

**For Hunterdon, Mercer, Middlesex, and Somerset Counties, call 1-888-551-6217.**

**For Monmouth and Ocean counties, call 1-877-352-7843.**





---

# FEDERALLY QUALIFIED HEALTH CENTERS (FQHC)

## Hunterdon County

### Zufall Health Smile Center

361 Route 31

Building C, Suite 701

Flemington, NJ 08822

908-968-4440

[zufallhealth.org](http://zufallhealth.org)

*\*dental services only\**

## Mercer County

### Henry J. Austin Health Centers

2433 Bellevue Avenue

Trenton, NJ 08618

317 Chambers Street

Trenton, NJ 08609

609-278-5900

[henryjaustin.org](http://henryjaustin.org)

2112 Ewing Street

Trenton, NJ 08609

321 North Warren Street

Trenton, NJ 08618

## Middlesex County

### Eric B. Chandler Health Centers

123 Church Street

New Brunswick, NJ 08901

732-235-2052

[rwjms.rutgers.edu/eric-b-chandler-health-center/english/overview](http://rwjms.rutgers.edu/eric-b-chandler-health-center/english/overview)

277 George Street

New Brunswick, NJ 08901

732-235-6700

---

## **Jewish Renaissance Medical Center**

275 Hobart Street

Perth Amboy, NJ 08861

**732-376-9333**

[jrnc.us](http://jrnc.us)

## **Jewish Renaissance Foundation Community Health Center**

1931 Oak Tree Road

Edison, NJ 08820

**732-482-9600**

[jrfnj.org](http://jrfnj.org)

## **Monmouth County**

### **Jane H. Booker Family Health Center**

1828 West Lake Avenue

Neptune, NJ 07753

**732-869-5700**

[hackensackmeridianhealth.org/en/locations/jsumc-family-health-center](http://hackensackmeridianhealth.org/en/locations/jsumc-family-health-center)

### **Monmouth Family Health Centers**

270 Broadway

Long Branch, NJ 07740

**732-923-7100**

335 Broadway

Long Branch, NJ 07740

**732-413-2030**

**\*dental services only at this location\***

80 Pavilion Avenue

Long Branch, NJ 07740

**732-963-0114**

**\*ob/gyn services only\***

[mfhcnj.org](http://mfhcnj.org)

---

## Visiting Nurses Association

1301 Main Street  
Asbury Park, NJ 07712  
**732-774-6333**

64-66 Bridge Ave  
Red Bank, NJ 07701  
**732-219-6620**

35 Broad Street  
Keyport, NJ 07735  
**732-888-4149**

597 Park Avenue  
Freehold, NJ 07728  
**732-294-2540**

[vnachc.org](http://vnachc.org)

## Ocean Health Initiatives - Freehold

20 Jackson Street  
Suite E  
Freehold, NJ 07728  
**732-363-6655**  
[ohinj.org](http://ohinj.org)

## Ocean County

### Ocean Health Initiatives

101 Second Street  
Lakewood, NJ 08701

333 Haywood Road  
Manahawkin, NJ 08050

1610 Route 88  
Brick, NJ 08724

686 Route 70  
Lakehurst, NJ 08733

10 Stockton Road  
Toms River, NJ 08753

798 Route 539  
Building 3  
Little Egg Harbor, NJ 08087

**732-363-6655**  
[ohinj.org](http://ohinj.org)

---

## **CHEMED Health Center**

1771 Madison Avenue  
Lakewood, NJ 08701

108 Hillside Boulevard  
Lakewood, NJ 08701

**732-364-6666**

[chemedhealth.org](http://chemedhealth.org)

## Somerset County

### **Zufall Health Center**

71 Fourth Street  
Somerville, NJ 08876

**908-526-2335**

[zufallhealth.org](http://zufallhealth.org)

For a comprehensive list of Federally  
Qualified Health Centers in NJ, please visit:  
[www.nj.gov/health/fhs/primarycare/fqhc/](http://www.nj.gov/health/fhs/primarycare/fqhc/)

---

# MEDICATION ASSISTED THERAPIES (MAT)

Opioid Detoxification and Maintenance Treatment Services

## Mercer County

### **Oaks Integrated Care**

314-316 E State Street

Trenton, NJ 08609

*Type of Care: Outpatient, Suboxone, Vivitrol*

2550 Brunswick Pike

Lawrenceville, NJ 08648

*Type of Care: Outpatient, Suboxone, Vivitrol*

**1-800-963-3377**

[oaksintcare.org](http://oaksintcare.org)

### **Iron Recovery and Wellness Center**

132/144 Perry Street

Trenton, NJ 08618

*Type of Care: Outpatient, Suboxone, Methadone*

**609-394-8988**

[ironwellness.org](http://ironwellness.org)

### **Pinnacle Treatment Centers**

801 New York Ave

Trenton, NJ 08638

**609-858-7870**

*Type of Care: Outpatient, Suboxone, Vivitrol, Methadone*

3444 Quakerbridge Road

Building 1A

Hamilton, NJ 08619

**609-838-9067**

*Type of Care: Outpatient, Intensive Outpatient, Subutex,  
Methadone*

[pinnacle-treatment.com](http://pinnacle-treatment.com)

---

## Middlesex County

### **Center for Network Therapy**

333 Cedar Avenue

Middlesex, NJ 08846

*Type of Care: Suboxone, Outpatient, Intensive Outpatient, Partial Care and Co-Occurring*

**732-560-1080**

[recoverycnt.com](http://recoverycnt.com)

### **New Brunswick Counseling Center**

320 Suydam Street

New Brunswick, NJ 08901

*Type of Care: Methadone Maintenance, Vivitrol, Intensive Outpatient, Women's Programs, Co-Occurring*

**732-246-4025**

### **South Amboy Comprehensive Treatment Center**

1 Main Street

South Amboy, NJ 08879

*Type of Care: Outpatient, Opioid Maintenance, Intensive Outpatient*

**732-727-2555**

[southamboyctc.com](http://southamboyctc.com)

### **Pinnacle Treatment Centers**

670 US Highway 1 North

Iselin, NJ 08830

*Type of Care: Outpatient, Suboxone, Vivitrol, Methadone*

**732-510-1140**

[pinnacle-treatment.com](http://pinnacle-treatment.com)

---

## Monmouth County

### **Discovery Institute**

80 Conover Road

Marlboro, NJ 07746

*Type of Care: Suboxone, Librium, Outpatient*

**844-478-6563**

[discoverynj.org](http://discoverynj.org)

### **JSAS Healthcare, Inc.**

685 Neptune Boulevard

Neptune, NJ 07753

*Type of Care: Methadone, Suboxone, Outpatient, Intensive Outpatient, Mommy & Me Program*

**732-988-8877**

[jsashealthcare.org](http://jsashealthcare.org)

### **Pinnacle Treatment Centers**

600 State Route 35 (inside Monmouth Medical Center)

Middletown, NJ 07701

*Type of Care: Outpatient, Suboxone*

**732-706-1300**

[pinnacletreatment.com](http://pinnacletreatment.com)

### **Crossroads Treatment Centers**

2040 6th Ave

Suite C & D

Neptune City, NJ 07753

*Type of Care: Outpatient, Methadone*

**800-805-6989**

[crossroadstreatmentcenters.com](http://crossroadstreatmentcenters.com)

---

## Ocean County

### **Pinnacle Treatment**

2001 Route 37 East

Toms River, NJ 08753

**732-605-4994**

*Type of Care: Methadone, Suboxone, Outpatient*

411 US Route 9

Suite 1

Lanoka Harbor, NJ 08734

**609-757-8246**

*Type of Care: Methadone, Subutex, Outpatient, Intensive Outpatient*

150 Brick Boulevard

Brick, NJ 08723

**732-458-2180**

*Type of Care: Methadone, Suboxone, Detox, Outpatient, Intensive Outpatient*

691 Mill Creek Road

Building 9

Manahawkin, NJ 08050

**732-232-2445**

*Type of Care: Suboxone, Subutex, Outpatient*

2008 Route 37 East

Toms River, NJ 08753

**732-403-7950**

*Type of Care: Suboxone, Subutex Outpatient*

[pinnacletreatment.com](http://pinnacletreatment.com)



---

## Crossroads Treatment Centers

4 Murray Grove Lane  
Second Floor

Lanoka Harbor, NJ 08734

*Type of Care: Outpatient, Methadone, Suboxone, Vivitrol*

751 Route 37 West

Toms River, NJ 08755

*Type of Care: Outpatient, Methadone*

**800-805-6989**

[crossroadstreatmentcenters.com](http://crossroadstreatmentcenters.com)

## Somerset County

### Somerset Treatment Services

118 West End Avenue

Somerville, NJ 08876

*Type of Care: Methadone, Suboxone, Intensive Outpatient for Men & Women, Co-Occurring, HIV Support Group*

**908-722-1232**

[somersetreatmentservices.org](http://somersetreatmentservices.org)

For further assistance finding MAT services contact:

- ReachNJ Services by dialing 1-844-REACHNJ (732-2465)
- NJ211 by dialing  
2-1-1 on a phone or at [nj211.org](http://nj211.org)
- [njsams.rutgers.edu/TreatmentDirectory/License](http://njsams.rutgers.edu/TreatmentDirectory/License)

---

# OUTPATIENT AND INTENSIVE OUTPATIENT TREATMENT SERVICES

## Hunterdon County

### **Acenda Integrated Health**

6 Gauntt Place

Building 2

Flemington, NJ 08822

*Type of Care: Outpatient, Intensive Outpatient, Co-Occurring*

**1-844-422-3632**

[acendahealth.org](http://acendahealth.org)

### **Catholic Charities Flemington Family Service Center**

6 Park Ave

Flemington, NJ 08822

*Type of Care: Outpatient, Intensive Outpatient*

**908-782-7905**

[ccdom.org](http://ccdom.org)

### **Freedom House Outpatient Services**

2004 State Route 31

Suite 9

Clinton, NJ 08822

*Type of Care: Outpatient. Intensive Outpatient, MAT*

**908-537-6043**

[ccdom.org](http://ccdom.org)

### **High Point Partial Care**

162 Broad Street

Flemington, NJ 08822

*Type of Care: Outpatient, Intensive Outpatient, Co-Occurring, Partial Care*

**908-788-5979**

[highpointpartialcare.com](http://highpointpartialcare.com)

---

## **Hunterdon Behavioral Health**

Hunterdon Medical Center

2100 Wescott Drive

Flemington, NJ 08822

*Type of Care: Outpatient, Intensive Outpatient, Co-Occurring, Inpatient Detox, Partial Care*

**908-788-6100**

[hunterdonhealth.org](http://hunterdonhealth.org)

## **Prevention Resources, Inc.**

4 Walter Foran Boulevard

Suite 410

Flemington, NJ 08822

*Type of Care: Outpatient*

**908-782-3909**

[njprevent.com](http://njprevent.com)

## **GenPsych - Flemington**

200 Route 31 North

Flemington, NJ 08822

*Type of Care: Outpatient, Dual Diagnosis*

**1-855-436-7792**

[genpsych.com](http://genpsych.com)

## **The Center for Change and Recovery LLC**

56 Main Street

Suite 2 B

Flemington, NJ 08822

*Type of Care: Outpatient, Co-Occurring*

**732-667-5567**

---

## Mercer County

### **Iron Recovery and Wellness Center**

132/144 Perry Street

Trenton, NJ 08618

*Type of Care: Outpatient, Intensive Outpatient*

**609-394-8988**

[ironwellness.org](http://ironwellness.org)

### **Another Door Opens Recovery Center**

700 South Clinton Avenue

Trenton, NJ 08611

*Type of Care: Outpatient, Intensive Outpatient, Partial Care, Co-Occurring*

**609-393-1219**

[adorc.org](http://adorc.org)

### **Catholic Charities Alcoholism, Addiction, and Guidance Clinic Program**

39 North Clinton Avenue

Trenton, NJ 08609

*Type of Care: Outpatient, For My Baby and Me Program, Intensive Outpatient*

**609-394-9398**

[catholiccharitiestrenton.org](http://catholiccharitiestrenton.org)

### **Corner House**

1 Monument Drive

Princeton, NJ 08540

*Type of Care: Outpatient, Intensive Outpatient, Co-Occurring*

**609-924-8018**

[cornerhousesite.com](http://cornerhousesite.com)

---

## **GenPsych**

932 State Road

Princeton, NJ 08540

*Type of Care: Outpatient, Dual Diagnosis, Children/Adolescent Programs*

**1-855-436-7792**

[genpsych.com](http://genpsych.com)

## **High Focus Centers**

15 Princess Road

Lawrenceville, NJ 08648

*Type of Care: Outpatient, Partial Care, Intensive Outpatient*

**609-349-7626**

[highfocuscenters.com](http://highfocuscenters.com)

## **For My Baby and Me**

*Type of Care: Referral Services for Pregnant People Using Opioids*

**609-256-7801**

[formybabyandme.org](http://formybabyandme.org)

## **Penn Medicine Princeton House Behavioral Health**

741 Mount Lucas Road

Princeton, NJ 08540

*Type of Care: Intensive Outpatient, Partial Care, Co-Occurring, Men's Program*

**609-613-4820**

1000 Herrontown Road

Princeton, NJ 08540

*Type of Care: Women's Programs Only*

**609-613-4321**

300 Clocktower Road

Suite 101

Hamilton, NJ 08690

*Type of Care: Co-Occurring, Children, Adolescent, Women's Programs*

**609-688-2788**

[princetonhcs.org](http://princetonhcs.org)

---

## **Summit Behavioral Health**

4065 Quakerbridge Road

Princeton Junction, NJ 08550

*Type of Care: Outpatient, Intensive Outpatient, Adolescent*

**855-906-1798**

[summithelps.com](http://summithelps.com)

## **Middlesex County**

### **Catholic Charities Diocese of Metuchen**

288 Rues Lane

East Brunswick, NJ 08816

*Type of Care: Outpatient*

**732-257-6100**

[ccdom.org](http://ccdom.org)

### **Center for Great Expectations**

984 Bergen Avenue

North Brunswick, NJ 08902

*Type of Care: Outpatient, Intensive Outpatient, Women's Programs*

**732-249-1653**

[cge-nj.org](http://cge-nj.org)

### **Center for Network Therapy, LLP**

333 Cedar Avenue

Building B

Middlesex, NJ 08846

*Type of Care: Outpatient, Withdrawal Management, Ambulatory*

*Detox*

**732-484-9661**

[recoverycnt.com](http://recoverycnt.com)

### **Journey to Wellness Inc.**

220 Market Street

Perth Amboy, NJ 08861

*Type of Care: Outpatient, Intensive Outpatient*

**732-709-7440**

[woodbridgedrugrehabcenters.com](http://woodbridgedrugrehabcenters.com)

---

## **Princeton House Behavioral Health**

1460 Livingston Avenue

Building 100

North Brunswick, NJ 08902

*Type of Care: Outpatient, Intensive Outpatient, Co-Occurring, Men's Programs, Women's Programs*

**732-729-3600**

[princetonhcs.org](http://princetonhcs.org)

## **New Hope Foundation**

### **Open Door**

6 Kirkpatrick Street

New Brunswick, NJ 08901

*Type of Care: Outpatient, Intensive Outpatient, Partial Care, Co-Occurring*

**732-246-4800**

[newhopeibhc.org](http://newhopeibhc.org)

## **Monmouth County**

### **Advanced Health and Education, LLC**

3 Corbett Way

Eatontown, NJ 07724

*Type of Care: Outpatient, Intensive Outpatient, Partial Care/Co-Occurring*

**844-302-8605**

[advhealth.com](http://advhealth.com)

### **Community YMCA Family Services**

166 Main Street

Matawan, NJ 07747

*Type of Care: Outpatient, Intensive Outpatient*

**732-290-9040**

[ymcanj.org](http://ymcanj.org)

---

## **Central New Jersey Comprehensive Treatment Center**

111 Route 35

Cliffwood, NJ 07727

*Type of Care: Outpatient, Intensive Outpatient*

**844-436-6419**

[ctcprograms.com](http://ctcprograms.com)

## **CPC Behavioral Healthcare**

270 Highway 35

Red Bank, NJ 07701

*Type of Care: Outpatient, Intensive Outpatient*

**732-842-2000**

[cpcbehavioral.org](http://cpcbehavioral.org)

## **Crossroads at Croydon Hall**

730 Newman Springs Road

Lincroft, NJ 07738

*Type of Care: Assessment, Referrals, Outpatient*

**732-615-2274**

[middletownnj.org/215/Crossroads-at-the-Lincroft-Annex](http://middletownnj.org/215/Crossroads-at-the-Lincroft-Annex)

## **Discovery Institute**

80 Conover Road

Marlboro, NJ 07746

*Type of Care: Outpatient, Intensive Outpatient, Short Term, Long Term, Residential*

**844-418-6563**

[discoverynj.org](http://discoverynj.org)

## **High Focus Centers**

6 Paragon Way

Suite 104

Freehold, NJ 07728

*Type of Care: Outpatient, Psychiatric, Co-Occurring, Substance Use*

**732-303-9900**

[highfocuscenters.pyramidhealthcarepa.com](http://highfocuscenters.pyramidhealthcarepa.com)



---

## **New Hope Foundation, Inc.**

Station A

2-2 Monmouth Avenue

Freehold, NJ 07728

*Type of Care: Adults, Adolescents, Outpatient, Intensive Outpatient*

**732-308-0113**

[newhopeibhc.org](http://newhopeibhc.org)

## **Ocean Township Human Services**

601 Deal Road

Oakhurst, NJ 07755

*Type of Care: Outpatient, Screening, Assessment, Adolescent  
Substance Use*

**732-531-2600**

[oceantwp.org](http://oceantwp.org)

## **Princeton House Behavioral Health**

615 Hope Road

Victoria Place, Building 1B

Eatontown, NJ 07724

*Type of Care: Woman's Program, Trauma & Addiction, Intensive  
Outpatient and Partial Hospitalization*

**848-208-260**

[princetonhcs.org](http://princetonhcs.org)

## **Recovery Innovations, Inc.**

1 Corbett Way

Eatontown, NJ 07724

*Type of Care: Outpatient, Intensive Outpatient,  
Partial Care/Co-Occurring*

**732-380-7061**

[recoveryinnovations.com](http://recoveryinnovations.com)

---

## **The Counseling Center of Freehold**

4345 Route 9

Freehold, NJ 07728

*Type of Care: Outpatient, Intensive Outpatient, Partial Care/Co-Occurring*

**732-515-4187**

[freeholdcounselingcenter.com](http://freeholdcounselingcenter.com)

## **GenPsych**

55 Willow Lane

Marlboro, NJ 07726

*Type of Care: Outpatient, Intensive Outpatient*

**1-855-436-7792**

[genpsych.com](http://genpsych.com)

## **Ocean County**

### **RWJBarnabas Health Behavioral Health Center**

1691 Route 9

Toms River, NJ 08754

*Type of Care: Intensive Outpatient, Dual Diagnosis, Inpatient (mental health only)*

**732-914-1688**

[rwjbh.org](http://rwjbh.org)

### **GenPsych**

940 Cedarbridge Avenue

Brick, NJ 08723

*Type of Care: Outpatient, Intensive Outpatient, Dual Diagnosis, Partial Hospitalization, Eating Disorders*

**1-855-436-7792**

[genpsych.com](http://genpsych.com)

### **Healy Counseling Associates**

1310 Hooper Avenue

Toms River, NJ 08753

*Type of Care: Outpatient, Gambling, Anger Management, Co-Occurring*

**732-797-0400**

[healycounseling.com](http://healycounseling.com)

---

## **Preferred Behavioral Health Group**

1500 Route 88

Brick, NJ 08723

*Type of Care: Outpatient for Children and Families*

700 Airport Road

Lakewood, NJ 08701

*Type of Care: Outpatient, Intensive Outpatient, Partial Care, Senior Program*

1191 Lakewood Road

Toms River, NJ 08753

*Type of Care: Substance Use*

591 Lakehurst Road

Toms River, NJ 08755

*Type of Care: Adolescent Intensive Outpatient, Adolescent Partial Care, Healthy Families, Mobile Response*

**732-367-4700**

[preferredbehavioral.org](http://preferredbehavioral.org)

## **Bright Harbor Healthcare**

340 Route 9

Bayville, NJ 08721

*Type of Care: Outpatient, Intensive Outpatient, Partial Care/Co-Occurring*

**732-349-5550**

[brightharbor.org](http://brightharbor.org)

## **The Center at Advanced Behavioral Care Services**

5 Airport Road

Lakewood, NJ 08723

*Type of Care: Outpatient, Intensive Outpatient, Partial Care/Co-Occurring*

**732-961-9666**

[advancedbehavioral.com](http://advancedbehavioral.com)

---

## Somerset County

### **Hackensack Meridian Health Carrier Clinic**

252 County Route 601

Belle Mead, NJ 08502

*Type of Care: Outpatient, Intensive Outpatient, Detox, Children, Adolescent, Inpatient, Dual Diagnosis*

**800-933-3579**

[hackensackmeridianhealth.org](http://hackensackmeridianhealth.org)

### **Catholic Charities Diocese of Metuchen**

540 Route 22 East

Bridgewater, NJ 08807

*Type of Care: Outpatient, Intensive Outpatient*

**908-722-1881**

[ccdom.org](http://ccdom.org)

### **Family Community Service**

339 West Second Street

Bound Brook, NJ 08805

*Type of Care: Outpatient*

**732-356-1082**

[fcssomerset.org](http://fcssomerset.org)

### **GenPsych**

380 Foothill Road

Bridgewater, NJ 08807

*Type of Care: Outpatient, Co-Occurring, Children, Adolescent*

**1-855-436-7792**

[genpsych.com](http://genpsych.com)

---

## **Guided Life Structures**

286 East Main Street  
Somerville, NJ 08876

*Type of Care: Outpatient, Intensive Outpatient, Women's Programs*

**908-704-0011**

[guidedlifestructures.org](http://guidedlifestructures.org)

## **High Focus Treatment Center**

3322 US 22 West  
Suite 1403

Branchburg, NJ 08876

*Type of Care: Intensive Outpatient, Partial Care*

**732-474-7447**

[highfocuscenters.com](http://highfocuscenters.com)

---

# RESIDENTIAL / TRANSITIONAL HOUSING

## Hunterdon County

### **Anderson House**

532 County Road 523

Whitehouse Station, NJ 08889

*Type of Care: Women Only Halfway House, Residential/Transitional Housing*

**908-534-5818**

[turningpointnj.org/Halfway-House](http://turningpointnj.org/Halfway-House)

### **Good News Home for Women**

33 Bartles Corner Road

Flemington, NJ 08822

*Type of Care: Women Only Halfway House, Residential/Transitional Housing*

**908-806-4220**

[www.goodnewshome.org](http://www.goodnewshome.org)

## Middlesex County

### **Naomi's Way**

4 Roosevelt Street

New Brunswick, NJ 08901

*Type of Care: Transitional Living for Homeless People with Disabilities*

**732-565-7974**

[ccdom.org/middlesex-naomis-way](http://ccdom.org/middlesex-naomis-way)

### **Ozanam Family Shelter**

89 Truman Drive

Edison, NJ 08817

*Type of Care: Transitional Living for Women & Families*

**732-985-0327**

[ccdom.org/middlesex-ozanam-family-shelter](http://ccdom.org/middlesex-ozanam-family-shelter)

---

## **State Street Housing**

933 State Street

Perth Amboy, NJ 08861

*Type of Care: Housing for Individuals and Couples without Children*

**732-826-7711**

[ccdom.org/middlesex-state-street-housing](http://ccdom.org/middlesex-state-street-housing)

## **Monmouth County**

### **Catholic Charities**

4261 Route 33

Tinton Falls, NJ 07753

*Type of Care: Transitional Housing for the Homeless*

**609-394-5181**

[catholiccharitiestrenton.org](http://catholiccharitiestrenton.org)

### **Discovery Institute**

80 Conover Road

Marlboro, NJ 07746

*Type of Care: Residential Treatment for Substance Use, Co-Occurring, Detox*

**732-946-9444**

[discoverynj.org](http://discoverynj.org)

### **Endeavor House - Pinnacle Treatment**

6 Broadway

Keyport, NJ 07735

*Type of Care: Long-Term Residential*

**732-264-3824 ext. 101**

[pinnacle-treatment.com/location/endeavor-house-north](http://pinnacle-treatment.com/location/endeavor-house-north)

---

## **New Hope Behavioral Health Center**

Epiphany House - Long Branch

373 Brighton Avenue

Long Branch, NJ 07740

*Type of Care: Halfway House for Women Only*

**732-870-9113**

Epiphany House - Asbury Park

1110 Grand Ave

Asbury Park, NJ 07712

*Type of Care: Halfway House for Women & Children*

**732-775-0720**

Mattie House

86 Conover Road

Marlboro, NJ 07746

*Type of Care: Halfway House for Men Only*

**732-817-0616**

Phillip House

190 Chelsea Avenue

Long Branch, NJ 07740

*Type of Care: Halfway House for Men, Outpatient for Adults and  
Adolescents*

**732-870-8500**

[newhopeibhc.org](http://newhopeibhc.org)



---

## Somerset County

### Center for Great Expectations

Suite 19B

Dellwood Lane

Somerset, NJ 08873

*Type of Care: Women & Children Residential / Halfway House*

**732-247-7003**

[cge-nj.org](http://cge-nj.org)

For a complete listing of Oxford Houses in the State of NJ, go to: [njaxfordhouse.org](http://njaxfordhouse.org)  
*Men's & Women's Self-Monitored Transitional Housing*

For a listing of Homeless Shelters in the State of New Jersey, go to: [homelessshelterdirectory.org/state/new\\_jersey](http://homelessshelterdirectory.org/state/new_jersey)

---

# SMOKING CESSATION

Mom's Quit Connection for Families

888-545-5191

[momsquit.com](http://momsquit.com)

New Jersey Quitline

866-657-8677

[www.njquitline.org](http://www.njquitline.org)

Nicotine and Tobacco Recovery Program

833-795-QUIT (7848)

[www.rwjbh.org/treatment-care/institute-for-prevention-and-recovery/programs](http://www.rwjbh.org/treatment-care/institute-for-prevention-and-recovery/programs)

Rutgers Tobacco Dependence Program

732-235-8222

[cts.rutgers.edu/tobacco-dependence-program/](http://cts.rutgers.edu/tobacco-dependence-program/)

Tobacco Free NJ

732-367-0611

[www.tobaccofreenj.com](http://www.tobaccofreenj.com)



---

# SELF HELP GROUPS FOR PEOPLE WITH SUBSTANCE USE

Narcotics Anonymous (NA)  
Meetings / Information: 732-933-0462  
Helpline: 800-992-0401  
[nanj.org](http://nanj.org)

Alcoholics Anonymous (AA)  
[www.nnjaa.org/nj-aa/](http://www.nnjaa.org/nj-aa/)

NJ Connect for Recovery  
855-652-3737  
[www.njconnectforrecovery.org](http://www.njconnectforrecovery.org)

SMART Recovery  
[www.smartrecovery.org](http://www.smartrecovery.org)



---

# SELF HELP GROUPS FOR FAMILIES AND FRIENDS OF THOSE WHO USE SUBSTANCES

Nar-Anon Family Groups

877-424-4491

[naranonofnj.org](http://naranonofnj.org)

Al-Anon / Alateen

888-944-5678

[nj-al-anon.org](http://nj-al-anon.org)

NJ Connect for Recovery

855-652-3737

[www.njconnectforrecovery.org](http://www.njconnectforrecovery.org)

SMART Recovery

[smartrecovery.org](http://smartrecovery.org)

Central NJ Chapter Grief Recovery After a Substance Passing (GRASP)

908-507-1008

[grasphelp.org](http://grasphelp.org)



---

# DIDN'T FIND WHAT YOU WERE LOOKING FOR?

Check out the NJ Resource Net system and NJ211 for assistance finding resources.

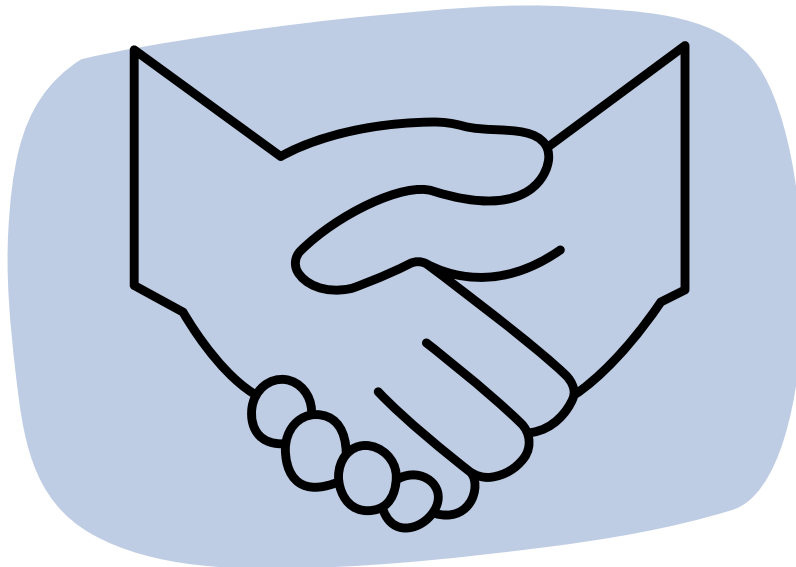
NJ Resource Net

<https://www.njresourcenet.org/>

NJ211

Dial 2-1-1 over the phone to link with someone

<https://www.nj211.org/>



---

This guide is for informational purposes only and does not constitute medical advice. CJFHC does not endorse any of the providers listed in this guide.

Notice a resource missing or a change we missed?  
Please contact Debbie Riscica at [driscica@cjfhc.org](mailto:driscica@cjfhc.org).