

NJ EARLY INTERVENTION WEEK 2024!

**BUILDING BLOCKS FOR BRIGHT FUTURES:
START STRONG AND THRIVE TOGETHER!**

VIRTUAL EVENTS

Zoom link will be sent to those that register

Click on the title or scroll down to see the detailed flyer with registration for each event!

**MON
5/13**

12:00 pm: Success with Virtual EI

6:00 pm: Transition out of EI

**TUE
5/14**

1:00 pm: Resources for Blind
& Visually Impaired Young Children

6:00 pm: Caring for the Caregivers

**WED
5/15**

6:00 pm: Importance of Self-care,
Stress Management and Life Balance

**THU
5/16**

1:00 pm: Understanding & Improving
Challenging Behavior in Young Children

**FRI
5/17**

11:30 am: Zumbini -Music & Movement
Virtual Family Fun!



NJEIS

NJ EARLY
INTERVENTION
SYSTEM
BIRTH TO THREE



Early Intervention Week 2024

Success with Virtual EI

Facilitated by:
Natalie Hackbarth,
M.A., CCC-
SLP/SLS

Learn about:

- Techniques and approaches for virtual sessions

- Benefits of using *virtual Emotional Intelligence (EI)*

And hear from families about their experiences and the effectiveness of virtual services

About:

Natalie Hackbarth is a New Jersey State Licensed and ASHA certified Speech-Language Pathologist/Speech-Language Specialist and the owner of Play All Day Speech Therapy LLC. She has over 10 years of experience providing play and routines-based speech therapy services to young children and their families using a parent coaching and training model.

Natalie is a neuro-diversity affirming provider who focuses on a child's strengths and interests. She is a firm believer that parents and caregivers make the biggest impact on a child's interaction and communication skills and that therapy should be fun and functional. She is passionate about all children receiving effective and quality Early Intervention Services, regardless of whether they are delivered in person or virtually.

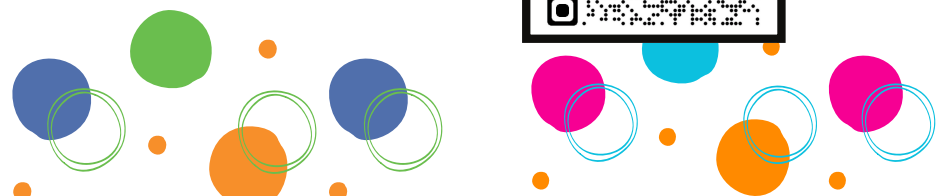
Virtual
Presentation:
Monday,
May 13th
12:00 PM

Discover the world of **VIRTUAL** EI services

Gain insight into remote methods of support for your children

[Register Here](#)

SCAN ME



Transition out of EI

Transitioning
Out of NJ Early
Intervention:
**What You Need
to Know**

About:

As your child approaches three years old or no longer meets Early Intervention eligibility criteria...

It's time to plan for the next steps.

Transitioning out of EI involves:

- Information about options for further services
- Which will meet your child's needs?
- Referral to Public School District
- Eligibility
- More acronyms?? **IEP, CST, LRE !!!**

NJEIS Family Support Coordinators will share a planning handbook with you; walk step-by-step through the process of referring to the school system; and answer your most common 'WHAT IF?' questions.

Together with your Ongoing Service Coordinator, we can help you to plan the stress out of this transition.

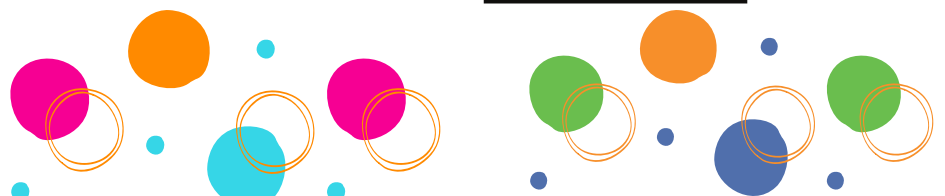
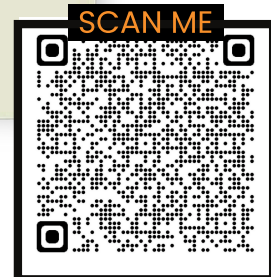
**Virtual
Presentation:
May 13th at
6:00 pm**

Presented by
The NJEIS
Family Support
Coordinator
team

SPAN
*(Statewide Parent
Advocacy Network)*
will join us to provide
additional supports and
resources about your
RIGHTS in the public
school system and
more!



[Register Here](#)



Early Intervention Week 2024

Resources for Blind/Visually Impaired Young Children

About:

Maria shares her:

- *Years of experience in EI & school districts
- *Wealth of knowledge for 0 -3 **and** older
- *Understanding of the needs of those with multiple disabilities

In this presentation, you'll discover valuable resources for both parents and professionals who have, or work with, children experiencing blindness or visual impairment.

The achievement of infants and toddlers facing visual challenges, or additional disabilities, and their families/caregivers, relies heavily on the implementation of an exceptional program.

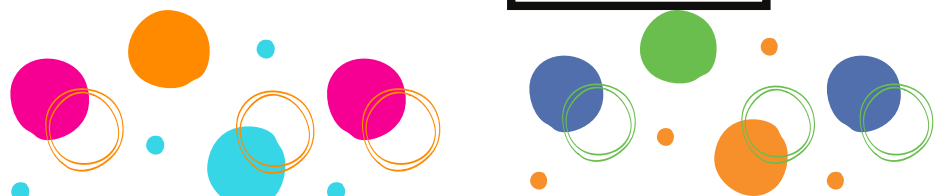
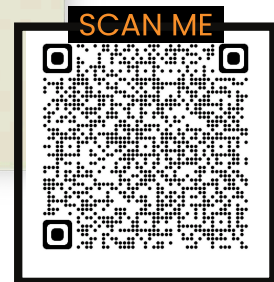
Maria Malapoe-Streko and her dedicated team of specialists at St. Joseph's School for the Blind meticulously design customized programs catering to the specific needs of each child in their program. These initiatives aim to facilitate a seamless transition into an appropriate school environment, laying the foundation for future achievements.

**Virtual
Presentation:
Tuesday,
May 14th
at 1:00 PM**

**Presented by
Maria Malapoe-Streko
MSW, LSW**
Director of Early
Intervention &
In-district Support
Services, St. Joseph's
School for the Blind



[Register Here](#)



Early Intervention Week 2024

Caring for the Caregivers: Strategies to Expand Resilience

Jamie will lead us in a variety of experiential practices.

About:

Caregivers, Professionals, interested adults, & teens.

We are all so busy helping and supporting those around us - let's not forget to support ourselves!

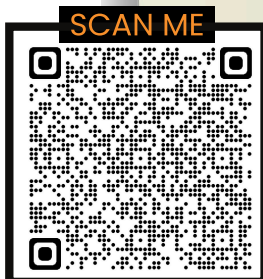
With the goal of protecting and strengthening our physical **and mental health**, this session will talk about and show us how to expand our resilience. We will practice several different strategies utilizing yoga, breathing techniques, mindfulness, and more.

Jamie Hanley is a Licensed Professional Counselor who practices through a holistic and intersectional feminist lens. Having experienced how much yoga helped her manage anxiety, Jamie integrates yoga therapy techniques such as mindfulness, breath work, meditation, and guided relaxation with cognitive interventions when supporting clients.
jamiehanley.com

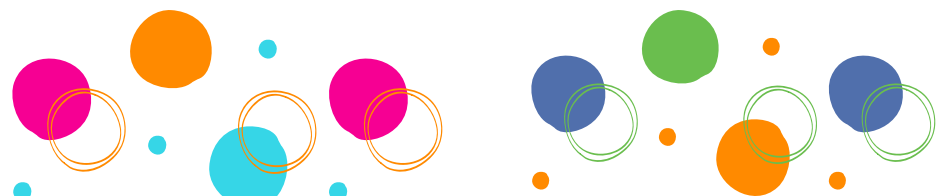
Virtual
Presentation:
Tuesday,
May 14th
at 6:00 PM

Facilitated
by Jamie
Hanley

Jamie Hanley has taught 100's of clients how to prioritize their mental health, learn coping skills, & live in alignment with their values.



[Register Here](#)



Early Intervention Week 2024

Importance of Self-Care, Stress Management and Life Balance

Presented by
Nicole Pratt

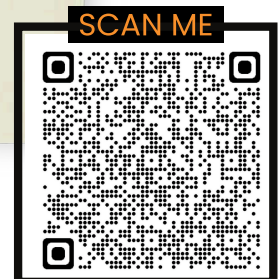
About:

Prioritizing self-care and the importance of self-care means to care for oneself with compassion. This session will provide individuals with information and resources to engage in daily self-care practices.

Nicole organizes trainings that educate parents and professionals, including teachers, administrators, and community organizations, on an array of both local and national education and health topics. She has a BA in Psychology and a Masters in Teaching. Nicole sits on several New Jersey State, national, and local parent-leader advisory committees/ boards that support/empower families and children.

Virtual
Presentation:
Wednesday,
May 15th
at 6 PM

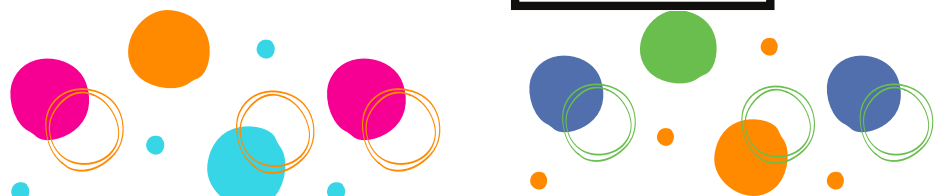
Nicole Pratt
is the SPAN Parent
Advocacy Network PTI-
Co-Director, Training
Program Director, and
LEAD Project
Director



[Register Here](#)



NJ EARLY
INTERVENTION
SYSTEM
BIRTH TO THREE



Early Intervention Week 2024

Understanding and Improving Challenging Behavior in Young Children

Presented by
Stephanie Flamini,
M.S., BCaBA



About

The behavior of young children is a form of communication. Our understanding of the **MEANING** of the behavior can help us develop strategies to meet their needs and help them develop new skills.

Participants will learn evidence-based, practical strategies to identify common functions of challenging behavior, ways to prevent behaviors, and strategies to help their child learn new skills during this crucial time in their development.

Presenter, Stephanie Flamini, M.S., BCaBA, is the Training and Technical Assistance Coordinator at the SNJREIC and has close to 20 years of experience in autism and early intervention. She specializes in the dissemination of evidence-based practices related to applied behavior analysis and early relational health. She is inspired by learning ways to support early mental and relational health in young children.

**Virtual
Presentation:
Thursday,
May 16th
at 1:00 PM**

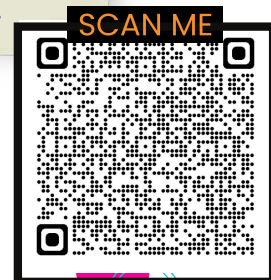
Learn:

- Functions of behavior
- How to teach coping & communication skills to children to support them through challenging events
- Ways to change the environment to affect behavior



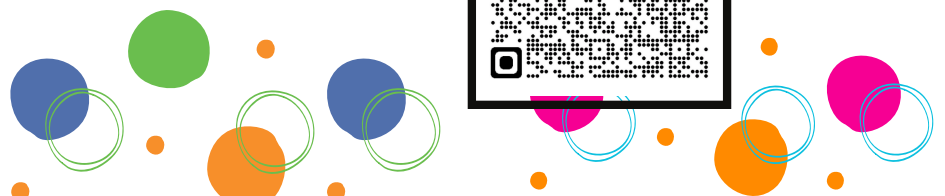
Southern NJ
Regional Early
Intervention
Collaborative

[Register Here](#)



NJEIS

NJ EARLY
INTERVENTION
SYSTEM
BIRTH TO THREE



Zumbini - Music & Movement Virtual Family Fun!

Zumbini with
Sarah Viviani

Virtual
Presentation: **F**
riday,
May 17th
at 11:30 AM

About:

Zumbini is a diverse, inclusive program that caters to both young children and their caregivers through music and movement.

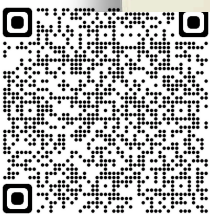
Outside of Zumbini, Sarah is a Special Educator for families of infants and toddlers with developmental delays through the New Jersey Early Intervention System.

"Educating both caregivers and young children through play is my passion, and Zumbini is the perfect place for that type of learning experience! I'm excited to meet you soon and get your family started on a musical journey!"

Move, Groove
and Grow with
your little one!

Caregivers,
families, children,
siblings, EIPs...
Let's all have fun
together!!

SCAN ME



[Register Here](#)

