



CJFHC

Central Jersey
Family Health Consortium

RESOURCE GUIDE FOR PARENTING & PREGNANT PEOPLE WITH SUBSTANCE USE

A GUIDE FOR PROFESSIONALS IN NEW JERSEY

Perinatal Addictions Prevention Project

30 Silverline Drive
Second Floor, Suite 1
North Brunswick, NJ 08902
732-947-5437  www.cjfhc.org

CONTENTS

Maternal and Child Health Consortia	3
Boards of Social Services	4
Diagnostic Centers for FAS/FASD	6
Domestic Violence Support	7
Connecting NJ	8
Federally Qualified Health Centers (FQHC)	9
Medication Assisted Therapies (MAT)	13
Outpatient & Intensive Outpatient Treatment Services	18
Residential / Transitional Housing	30
Smoking Cessation	34
Self Help Groups	35
General Assistance	37

PERINATAL ADDICTIONS PREVENTION PROJECT

Our Mission Statement

To improve the wellbeing of pregnant people and people of childbearing age affected by the challenges of substance use.

Our goal is to ensure the health and wellbeing of every parent and child.

The Perinatal Addictions Prevention Project:

- Provide prevention education to professionals & consumers on the impact of alcohol, tobacco, and other drugs on pregnant people and their children.
- Promote the use of the Perinatal Risk Assessment (PRA) to Prenatal Care Providers.
- Provide resources and referrals for people capable of pregnancy affected by substance use.
- Collaborate with municipal, county, and state alliances, task forces, coalitions, and councils to reduce and prevent substance use.

Central Jersey Family Health Consortium (CJFHC)

30 Silverline Drive
Second Floor, Suite 1
North Brunswick, NJ 08902
732-937-5437 ext. 135
cjfhc.org



Partnership for Maternal Child Health of Northern New Jersey (PMCHNNJ)

50 Park Place
Suite 700
Newark, NJ 07102
201-876-8900 ext. 228
partnershipmch.org



Southern New Jersey Perinatal Cooperative (SNJPC)

2500 McClellan Avenue
Suite 250
Pennsauken, NJ 08109
856-675-5310
snjpc.org



BOARDS OF SOCIAL SERVICES

Hunterdon County Division of Social Services

6 Gauntt Place
PO Box 2900
Flemington, NJ 08822
Phone 908-788-1300
Fax 908-806-4588
co.hunterdon.nj.us/615/Social-Services

Mercer County Board of Social Services

PO Box 1450
Trenton, NJ 08650
Phone 609-989-4320
Fax 609-394-6638
mcboss.org

Middlesex County Board of Social Services

181 How Lane
PO Box 509
New Brunswick, NJ 08901
Phone 732-745-3500
Fax 732-745-4558
middlesexsocialservices.com

Monmouth County Division of Social Services

3000 Kozloski Road
Freehold, NJ 07728
Phone 732-431-6000
Fax 732-431-6266
co.monmouth.nj.us/page.aspx?ID=163

Ocean County Board of Social Services

1027 Hooper Avenue

PO Box 547

Toms River, NJ 08753

Phone 732-349-1500

Fax 732-244-8075

co.ocean.nj.us/SocialServices/

Somerset County Board of Social Services

73 East High Street

PO Box 936

Somerville, NJ 08876

Phone 908-526-8800

Fax 908-707-1941

www.co.somerset.nj.us/government/affiliated-agencies/social-services

DIAGNOSTIC CENTERS FOR FETAL ALCOHOL SPECTRUM DISORDERS (FASD)

Children's Specialized Hospital

Multiple Locations Available

888-244-5373

www.rwjbh.org/childrens-specialized-hospital/

John F. Kennedy Medical Center Child Evaluation Center

2050 Oak Tree Road

Edison, NJ 08820

732-548-7610

Jersey Shore University Medical Center Child Evaluation Center & FASD Center

81 Davis Ave

Suite 4

Neptune, NJ 07753

732-776-4178 ext. 2



For a comprehensive list of Child Evaluation Centers, please visit:
www.nj.gov/health/fhs/specialpediatrics/child-evaluation/contacts/

DOMESTIC VIOLENCE SUPPORT

Hunterdon County

Safe in Hunterdon

47 East Main Street
Flemington, NJ 08822
908-809-0019
safeinhunterdon.org

Mercer County

Womanspace

1530 Brunswick Avenue
Lawrenceville, NJ 08648
800-572-SAFE (7233)
womanspace.org

Middlesex County

Women Aware

250 Livingston Avenue
New Brunswick, NJ 08901
732-249-4504
womenaware.net

Monmouth County

180 Turning Lives Around

1 Bethany Road
Hazlet, NJ 07730
888-843-9262
180nj.org

Ocean County

Dottie's House

PO Box 4002
Brick Township, NJ 08723
732-262-2009
dottieshouse.org

Providence House

88 Schoolhouse Road
Whiting, NJ 08759
732-244-8259 or 800-246-8910
catholiccharitiestrenton.org

Somerset County

Safe and Sound Somerset

427 Homestead Road
Suite 2
Hillsborough, NJ 08844
908-359-0003
safe-sound.org

For a comprehensive list of Domestic Violence Direct Services in NJ, please visit:
www.nj.gov/dcf/women/domestic/

CONNECTING NJ

What is Connecting NJ?

Connecting NJ connects people who are pregnant and/or parenting, children, and families to community resources and services that address their needs.

What type of information can Connecting NJ provide you with?

Connecting NJ can help you find resources for various needs such as housing, health insurance, child care, and transportation. We can also connect you with free home visiting programs, case management, WIC, and other programs in your area.

For more information, contact Connecting NJ directly.

For Hunterdon, Mercer, Middlesex, and Somerset Counties, call 1-888-551-6217.

For Monmouth and Ocean counties, call 1-877-352-7843.



FEDERALLY QUALIFIED HEALTH CENTERS (FQHC)

Hunterdon County

Zufall Health Smile Center

361 Route 31

Building C, Suite 701

Flemington, NJ 08822

908-968-4440

zufallhealth.org

dental services only

Mercer County

Henry J. Austin Health Centers

2433 Bellevue Avenue

Trenton, NJ 08618

317 Chambers Street

Trenton, NJ 08609

609-278-5900

henryjaustin.org

2112 Ewing Street

Trenton, NJ 08609

321 North Warren Street

Trenton, NJ 08618

Middlesex County

Eric B. Chandler Health Centers

123 Church Street

New Brunswick, NJ 08901

732-235-2052

rwjms.rutgers.edu/eric-b-chandler-health-center/english/overview

277 George Street

New Brunswick, NJ 08901

732-235-6700

Jewish Renaissance Medical Center

275 Hobart Street
Perth Amboy, NJ 08861
732-376-9333
jrnc.us

Jewish Renaissance Foundation Community Health Center

1931 Oak Tree Road
Edison, NJ 08820
732-482-9600
jrfnj.org

Monmouth County

Jane H. Booker Family Health Center

1828 West Lake Avenue
Neptune, NJ 07753
732-869-5700
hackensackmeridianhealth.org/en/locations/jsumc-family-health-center

Monmouth Family Health Centers

270 Broadway
Long Branch, NJ 07740
732-923-7100

335 Broadway
Long Branch, NJ 07740
732-413-2030

dental services only at this location

80 Pavilion Avenue
Long Branch, NJ 07740
732-963-0114
ob/gyn services only
mfhcnj.org

Visiting Nurses Association

1301 Main Street
Asbury Park, NJ 07712
732-774-6333

64-66 Bridge Ave
Red Bank, NJ 07701
732-219-6620

35 Broad Street
Keyport, NJ 07735
732-888-4149

597 Park Avenue
Freehold, NJ 07728
732-294-2540

vnachc.org

Ocean Health Initiatives - Freehold

20 Jackson Street
Suite E
Freehold, NJ 07728
732-363-6655
ohinj.org

Ocean County

Ocean Health Initiatives

101 Second Street
Lakewood, NJ 08701

333 Haywood Road
Manahawkin, NJ 08050

1610 Route 88
Brick, NJ 08724

686 Route 70
Lakehurst, NJ 08733

10 Stockton Road
Toms River, NJ 08753

798 Route 539
Building 3
Little Egg Harbor, NJ 08087

732-363-6655
ohinj.org

CHEMED Health Center

1771 Madison Avenue
Lakewood, NJ 08701

108 Hillside Boulevard
Lakewood, NJ 08701

732-364-6666

chemedhealth.org

Somerset County

Zufall Health Center

71 Fourth Street
Somerville, NJ 08876

908-526-2335

zufallhealth.org

For a comprehensive list of Federally
Qualified Health Centers in NJ, please visit:
www.nj.gov/health/fhs/primarycare/fqhc/

MEDICATION ASSISTED THERAPIES (MAT)

Opioid Detoxification and Maintenance Treatment Services

Mercer County

Oaks Integrated Care

314-316 E State Street

Trenton, NJ 08609

Type of Care: Outpatient, Suboxone, Vivitrol

2550 Brunswick Pike

Lawrenceville, NJ 08648

Type of Care: Outpatient, Suboxone, Vivitrol

1-800-963-3377

oaksintcare.org

Iron Recovery and Wellness Center

132/144 Perry Street

Trenton, NJ 08618

Type of Care: Outpatient, Suboxone, Methadone

609-394-8988

ironwellness.org

Pinnacle Treatment Centers

801 New York Ave

Trenton, NJ 08638

609-858-7870

Type of Care: Outpatient, Suboxone, Vivitrol, Methadone

3444 Quakerbridge Road

Building 1A

Hamilton, NJ 08619

609-838-9067

*Type of Care: Outpatient, Intensive Outpatient, Subutex,
Methadone*

pinnacle-treatment.com

Middlesex County

Center for Network Therapy

333 Cedar Avenue

Middlesex, NJ 08846

Type of Care: Suboxone, Outpatient, Intensive Outpatient, Partial Care and Co-Occurring

732-560-1080

recoverycnt.com

New Brunswick Counseling Center

320 Suydam Street

New Brunswick, NJ 08901

Type of Care: Methadone Maintenance, Vivitrol, Intensive Outpatient, Women's Programs, Co-Occurring

732-246-4025

South Amboy Comprehensive Treatment Center

1 Main Street

South Amboy, NJ 08879

Type of Care: Outpatient, Opioid Maintenance, Intensive Outpatient

732-727-2555

southamboyctc.com

Pinnacle Treatment Centers

670 US Highway 1 North

Iselin, NJ 08830

Type of Care: Outpatient, Suboxone, Vivitrol, Methadone

732-510-1140

pinnacle-treatment.com

Monmouth County

Discovery Institute

80 Conover Road

Marlboro, NJ 07746

Type of Care: Suboxone, Librium, Outpatient

844-478-6563

discoverynj.org

JSAS Healthcare, Inc.

685 Neptune Boulevard

Neptune, NJ 07753

Type of Care: Methadone, Suboxone, Outpatient, Intensive Outpatient, Mommy & Me Program

732-988-8877

jsashealthcare.org

Pinnacle Treatment Centers

600 State Route 35 (inside Monmouth Medical Center)

Middletown, NJ 07701

Type of Care: Outpatient, Suboxone

732-706-1300

pinnacletreatment.com

Crossroads Treatment Centers

2040 6th Ave

Suite C & D

Neptune City, NJ 07753

Type of Care: Outpatient, Methadone

800-805-6989

crossroadstreatmentcenters.com

Ocean County

Pinnacle Treatment

2001 Route 37 East

Toms River, NJ 08753

732-605-4994

Type of Care: Methadone, Suboxone, Outpatient

411 US Route 9

Suite 1

Lanoka Harbor, NJ 08734

609-757-8246

Type of Care: Methadone, Subutex, Outpatient, Intensive Outpatient

150 Brick Boulevard

Brick, NJ 08723

732-458-2180

Type of Care: Methadone, Suboxone, Detox, Outpatient, Intensive Outpatient

691 Mill Creek Road

Building 9

Manahawkin, NJ 08050

732-232-2445

Type of Care: Suboxone, Subutex, Outpatient

2008 Route 37 East

Toms River, NJ 08753

732-403-7950

Type of Care: Suboxone, Subutex Outpatient

pinnacletreatment.com

Crossroads Treatment Centers

4 Murray Grove Lane
Second Floor

Lanoka Harbor, NJ 08734

Type of Care: Outpatient, Methadone, Suboxone, Vivitrol

751 Route 37 West

Toms River, NJ 08755

Type of Care: Outpatient, Methadone

800-805-6989

crossroadstreatmentcenters.com

Somerset County

Somerset Treatment Services

118 West End Avenue

Somerville, NJ 08876

Type of Care: Methadone, Suboxone, Intensive Outpatient for Men & Women, Co-Occurring, HIV Support Group

908-722-1232

somersetmentservices.org

For further assistance finding MAT services contact:

- ReachNJ Services by dialing 1-844-REACHNJ (732-2465)
- NJ211 by dialing
2-1-1 on a phone or at nj211.org
- njsams.rutgers.edu/TreatmentDirectory/License

OUTPATIENT AND INTENSIVE OUTPATIENT TREATMENT SERVICES

Hunterdon County

Acenda Integrated Health

6 Gauntt Place

Building 2

Flemington, NJ 08822

Type of Care: Outpatient, Intensive Outpatient, Co-Occurring

1-844-422-3632

acendahealth.org

Catholic Charities Flemington Family Service Center

6 Park Ave

Flemington, NJ 08822

Type of Care: Outpatient, Intensive Outpatient

908-782-7905

ccdom.org

Freedom House Outpatient Services

2004 State Route 31

Suite 9

Clinton, NJ 08822

Type of Care: Outpatient. Intensive Outpatient, MAT

908-537-6043

ccdom.org

High Point Partial Care

162 Broad Street

Flemington, NJ 08822

Type of Care: Outpatient, Intensive Outpatient, Co-Occurring, Partial Care

908-788-5979

highpointpartialcare.com

Hunterdon Behavioral Health

Hunterdon Medical Center

2100 Wescott Drive

Flemington, NJ 08822

Type of Care: Outpatient, Intensive Outpatient, Co-Occurring, Inpatient Detox, Partial Care

908-788-6100

hunterdonhealth.org

Prevention Resources, Inc.

4 Walter Foran Boulevard

Suite 410

Flemington, NJ 08822

Type of Care: Outpatient

908-782-3909

njprevent.com

GenPsych - Flemington

200 Route 31 North

Flemington, NJ 08822

Type of Care: Outpatient, Dual Diagnosis

1-855-436-7792

genpsych.com

The Center for Change and Recovery LLC

56 Main Street

Suite 2 B

Flemington, NJ 08822

Type of Care: Outpatient, Co-Occurring

732-667-5567

Mercer County

Iron Recovery and Wellness Center

132/144 Perry Street

Trenton, NJ 08618

Type of Care: Outpatient, Intensive Outpatient

609-394-8988

ironwellness.org

Another Door Opens Recovery Center

700 South Clinton Avenue

Trenton, NJ 08611

Type of Care: Outpatient, Intensive Outpatient, Partial Care, Co-Occurring

609-393-1219

adorc.org

Catholic Charities Alcoholism, Addiction, and Guidance Clinic Program

39 North Clinton Avenue

Trenton, NJ 08609

Type of Care: Outpatient, For My Baby and Me Program, Intensive Outpatient

609-394-9398

catholiccharitiestrenton.org

Corner House

1 Monument Drive

Princeton, NJ 08540

Type of Care: Outpatient, Intensive Outpatient, Co-Occurring

609-924-8018

cornerhousesite.com

GenPsych

932 State Road

Princeton, NJ 08540

Type of Care: Outpatient, Dual Diagnosis, Children/Adolescent Programs

1-855-436-7792

genpsych.com

High Focus Centers

15 Princess Road

Lawrenceville, NJ 08648

Type of Care: Outpatient, Partial Care, Intensive Outpatient

609-349-7626

highfocuscenters.com

For My Baby and Me

Type of Care: Referral Services for Pregnant People Using Opioids

609-256-7801

formybabyandme.org

Penn Medicine Princeton House Behavioral Health

741 Mount Lucas Road

Princeton, NJ 08540

Type of Care: Intensive Outpatient, Partial Care, Co-Occurring, Men's Program

609-613-4820

1000 Herrontown Road

Princeton, NJ 08540

Type of Care: Women's Programs Only

609-613-4321

300 Clocktower Road

Suite 101

Hamilton, NJ 08690

Type of Care: Co-Occurring, Children, Adolescent, Women's Programs

609-688-2788

princetonhcs.org

Summit Behavioral Health

4065 Quakerbridge Road

Princeton Junction, NJ 08550

Type of Care: Outpatient, Intensive Outpatient, Adolescent

855-906-1798

summithelps.com

Middlesex County

Catholic Charities Diocese of Metuchen

288 Rues Lane

East Brunswick, NJ 08816

Type of Care: Outpatient

732-257-6100

ccdom.org

Center for Great Expectations

984 Bergen Avenue

North Brunswick, NJ 08902

Type of Care: Outpatient, Intensive Outpatient, Women's Programs

732-249-1653

cge-nj.org

Center for Network Therapy, LLP

333 Cedar Avenue

Building B

Middlesex, NJ 08846

Type of Care: Outpatient, Withdrawal Management, Ambulatory

Detox

732-484-9661

recoverycnt.com

Journey to Wellness Inc.

220 Market Street

Perth Amboy, NJ 08861

Type of Care: Outpatient, Intensive Outpatient

732-709-7440

woodbridgedrugrehabcenters.com

Princeton House Behavioral Health

1460 Livingston Avenue

Building 100

North Brunswick, NJ 08902

Type of Care: Outpatient, Intensive Outpatient, Co-Occurring, Men's Programs, Women's Programs

732-729-3600

princetonhcs.org

New Hope Foundation

Open Door

6 Kirkpatrick Street

New Brunswick, NJ 08901

Type of Care: Outpatient, Intensive Outpatient, Partial Care, Co-Occurring

732-246-4800

newhopeibhc.org

Monmouth County

Advanced Health and Education, LLC

3 Corbett Way

Eatontown, NJ 07724

Type of Care: Outpatient, Intensive Outpatient, Partial Care/Co-Occurring

844-302-8605

advhealth.com

Community YMCA Family Services

166 Main Street

Matawan, NJ 07747

Type of Care: Outpatient, Intensive Outpatient

732-290-9040

ymcanj.org

Central New Jersey Comprehensive Treatment Center

111 Route 35

Cliffwood, NJ 07727

Type of Care: Outpatient, Intensive Outpatient

844-436-6419

ctcprograms.com

CPC Behavioral Healthcare

270 Highway 35

Red Bank, NJ 07701

Type of Care: Outpatient, Intensive Outpatient

732-842-2000

cpcbehavioral.org

Crossroads at Croydon Hall

730 Newman Springs Road

Lincroft, NJ 07738

Type of Care: Assessment, Referrals, Outpatient

732-615-2274

middletownnj.org/215/Crossroads-at-the-Lincroft-Annex

Discovery Institute

80 Conover Road

Marlboro, NJ 07746

Type of Care: Outpatient, Intensive Outpatient, Short Term, Long Term, Residential

844-418-6563

discoverynj.org

High Focus Centers

6 Paragon Way

Suite 104

Freehold, NJ 07728

Type of Care: Outpatient, Psychiatric, Co-Occurring, Substance Use

732-303-9900

highfocuscenters.pyramidhealthcarepa.com

New Hope Foundation, Inc.

Station A

2-2 Monmouth Avenue

Freehold, NJ 07728

Type of Care: Adults, Adolescents, Outpatient, Intensive Outpatient

732-308-0113

newhopeibhc.org

Ocean Township Human Services

601 Deal Road

Oakhurst, NJ 07755

*Type of Care: Outpatient, Screening, Assessment, Adolescent
Substance Use*

732-531-2600

oceantwp.org

Princeton House Behavioral Health

615 Hope Road

Victoria Place, Building 1B

Eatontown, NJ 07724

*Type of Care: Woman's Program, Trauma & Addiction, Intensive
Outpatient and Partial Hospitalization*

848-208-260

princetonhcs.org

Recovery Innovations, Inc.

1 Corbett Way

Eatontown, NJ 07724

*Type of Care: Outpatient, Intensive Outpatient,
Partial Care/Co-Occurring*

732-380-7061

recoveryinnovations.com

The Counseling Center of Freehold

4345 Route 9

Freehold, NJ 07728

Type of Care: Outpatient, Intensive Outpatient, Partial Care/Co-Occurring

732-515-4187

freeholdcounselingcenter.com

GenPsych

55 Willow Lane

Marlboro, NJ 07726

Type of Care: Outpatient, Intensive Outpatient

1-855-436-7792

genpsych.com

Ocean County

RWJBarnabas Health Behavioral Health Center

1691 Route 9

Toms River, NJ 08754

Type of Care: Intensive Outpatient, Dual Diagnosis, Inpatient (mental health only)

732-914-1688

rwjbh.org

GenPsych

940 Cedarbridge Avenue

Brick, NJ 08723

Type of Care: Outpatient, Intensive Outpatient, Dual Diagnosis, Partial Hospitalization, Eating Disorders

1-855-436-7792

genpsych.com

Healy Counseling Associates

1310 Hooper Avenue

Toms River, NJ 08753

Type of Care: Outpatient, Gambling, Anger Management, Co-Occurring

732-797-0400

healycounseling.com

Preferred Behavioral Health Group

1500 Route 88

Brick, NJ 08723

Type of Care: Outpatient for Children and Families

700 Airport Road

Lakewood, NJ 08701

Type of Care: Outpatient, Intensive Outpatient, Partial Care, Senior Program

1191 Lakewood Road

Toms River, NJ 08753

Type of Care: Substance Use

591 Lakehurst Road

Toms River, NJ 08755

Type of Care: Adolescent Intensive Outpatient, Adolescent Partial Care, Healthy Families, Mobile Response

732-367-4700

preferredbehavioral.org

Bright Harbor Healthcare

340 Route 9

Bayville, NJ 08721

Type of Care: Outpatient, Intensive Outpatient, Partial Care/Co-Occurring

732-349-5550

brightharbor.org

The Center at Advanced Behavioral Care Services

5 Airport Road

Lakewood, NJ 08723

Type of Care: Outpatient, Intensive Outpatient, Partial Care/Co-Occurring

732-961-9666

advancedbehavioral.com

Somerset County

Hackensack Meridian Health Carrier Clinic

252 County Route 601

Belle Mead, NJ 08502

Type of Care: Outpatient, Intensive Outpatient, Detox, Children, Adolescent, Inpatient, Dual Diagnosis

800-933-3579

hackensackmeridianhealth.org

Catholic Charities Diocese of Metuchen

540 Route 22 East

Bridgewater, NJ 08807

Type of Care: Outpatient, Intensive Outpatient

908-722-1881

ccdom.org

Family Community Service

339 West Second Street

Bound Brook, NJ 08805

Type of Care: Outpatient

732-356-1082

fcssomerset.org

GenPsych

380 Foothill Road

Bridgewater, NJ 08807

Type of Care: Outpatient, Co-Occurring, Children, Adolescent

1-855-436-7792

genpsych.com

Guided Life Structures

286 East Main Street
Somerville, NJ 08876

Type of Care: Outpatient, Intensive Outpatient, Women's Programs

908-704-0011

guidedlifestructures.org

High Focus Treatment Center

3322 US 22 West
Suite 1403

Branchburg, NJ 08876

Type of Care: Intensive Outpatient, Partial Care

732-474-7447

highfocuscenters.com

RESIDENTIAL / TRANSITIONAL HOUSING

Hunterdon County

Anderson House

532 County Road 523

Whitehouse Station, NJ 08889

Type of Care: Women Only Halfway House, Residential/Transitional Housing

908-534-5818

turningpointnj.org/Halfway-House

Good News Home for Women

33 Bartles Corner Road

Flemington, NJ 08822

Type of Care: Women Only Halfway House, Residential/Transitional Housing

908-806-4220

www.goodnewshome.org

Middlesex County

Naomi's Way

4 Roosevelt Street

New Brunswick, NJ 08901

Type of Care: Transitional Living for Homeless People with Disabilities

732-565-7974

ccdom.org/middlesex-naomis-way

Ozanam Family Shelter

89 Truman Drive

Edison, NJ 08817

Type of Care: Transitional Living for Women & Families

732-985-0327

ccdom.org/middlesex-ozanam-family-shelter

State Street Housing

933 State Street

Perth Amboy, NJ 08861

Type of Care: Housing for Individuals and Couples without Children

732-826-7711

ccdom.org/middlesex-state-street-housing

Monmouth County

Catholic Charities

4261 Route 33

Tinton Falls, NJ 07753

Type of Care: Transitional Housing for the Homeless

609-394-5181

catholiccharitiestrenton.org

Discovery Institute

80 Conover Road

Marlboro, NJ 07746

Type of Care: Residential Treatment for Substance Use, Co-Occurring, Detox

732-946-9444

discoverynj.org

Endeavor House - Pinnacle Treatment

6 Broadway

Keyport, NJ 07735

Type of Care: Long-Term Residential

732-264-3824 ext. 101

pinnacle-treatment.com/location/endeavor-house-north

New Hope Behavioral Health Center

Epiphany House - Long Branch

373 Brighton Avenue

Long Branch, NJ 07740

Type of Care: Halfway House for Women Only

732-870-9113

Epiphany House - Asbury Park

1110 Grand Ave

Asbury Park, NJ 07712

Type of Care: Halfway House for Women & Children

732-775-0720

Mattie House

86 Conover Road

Marlboro, NJ 07746

Type of Care: Halfway House for Men Only

732-817-0616

Phillip House

190 Chelsea Avenue

Long Branch, NJ 07740

*Type of Care: Halfway House for Men, Outpatient for Adults and
Adolescents*

732-870-8500

newhopeibhc.org

Somerset County

Center for Great Expectations

Suite 19B

Dellwood Lane

Somerset, NJ 08873

Type of Care: Women & Children Residential / Halfway House

732-247-7003

cge-nj.org

For a complete listing of Oxford Houses in the State of NJ, go to: njaxfordhouse.org
Men's & Women's Self-Monitored Transitional Housing

For a listing of Homeless Shelters in the State of New Jersey, go to: homelessshelterdirectory.org/state/new_jersey

SMOKING CESSATION

Mom's Quit Connection for Families

888-545-5191

momsquit.com

New Jersey Quitline

866-657-8677

www.njqitline.org

Nicotine and Tobacco Recovery Program

833-795-QUIT (7848)

www.rwjbh.org/treatment-care/institute-for-prevention-and-recovery/programs

Rutgers Tobacco Dependence Program

732-235-8222

cts.rutgers.edu/tobacco-dependence-program/

Tobacco Free NJ

732-367-0611

www.tobaccofreenj.com



SELF HELP GROUPS FOR PEOPLE WITH SUBSTANCE USE

Narcotics Anonymous (NA)
Meetings / Information: 732-933-0462
Helpline: 800-992-0401
nanj.org

Alcoholics Anonymous (AA)
www.nnjaa.org/nj-aa/

NJ Connect for Recovery
855-652-3737
www.njconnectforrecovery.org

SMART Recovery
www.smartrecovery.org



SELF HELP GROUPS FOR FAMILIES AND FRIENDS OF THOSE WHO USE SUBSTANCES

Nar-Anon Family Groups

877-424-4491

naranonofnj.org

Al-Anon / Alateen

888-944-5678

nj-al-anon.org

NJ Connect for Recovery

855-652-3737

www.njconnectforrecovery.org

SMART Recovery

smartrecovery.org

Central NJ Chapter Grief Recovery After a Substance Passing (GRASP)

908-507-1008

grasphelp.org



DIDN'T FIND WHAT YOU WERE LOOKING FOR?

Check out the NJ Resource Net system and NJ211 for assistance finding resources.

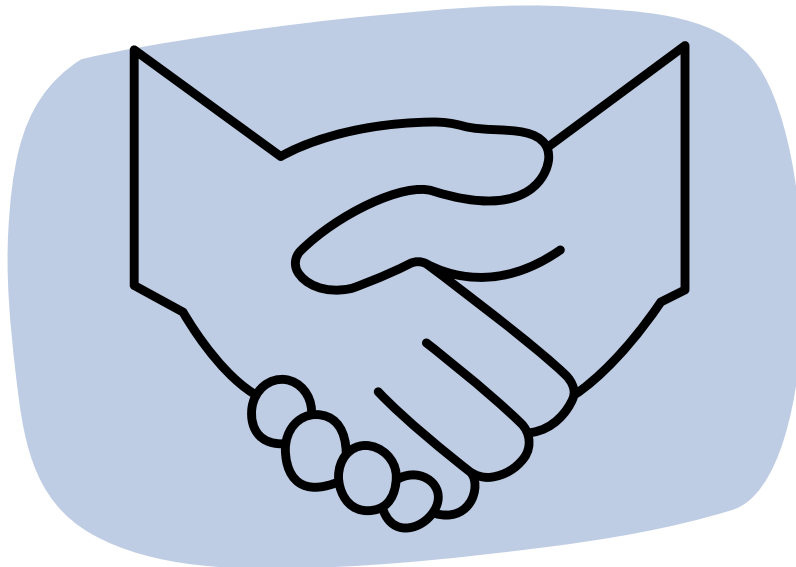
NJ Resource Net

<https://www.njresourcenet.org/>

NJ211

Dial 2-1-1 over the phone to link with someone

<https://www.nj211.org/>



This guide is for informational purposes only and does not constitute medical advice. CJFHC does not endorse any of the providers listed in this guide.

Notice a resource missing or a change we missed?
Please contact Erica McPolin
at emcpolin@cjfhc.org